

Canada

Escape the world as you know it, Canada is calling. Crouched in the soaring peaks of the Coast and Rocky Mountains, Canada's ski resorts cover the gamut from the enormous expanses of Whistler Blackcomb to the quaint resort towns of Silver Star and Fernie.

Western Canada is the Mecca for most snow sports addicts. Whistler Blackcomb, the largest ski resort in North America, is just two hours from the major international destination of Vancouver and attracts the lion's share of visitors. People who have lived there for years still say they haven't skied everything these mountains have to offer.

Most of Canada's other major resorts nestle in the picturesque Rocky Mountains. In addition to fantastic scenery, Canada's people will make you feel most welcome; Canadians are exceptionally friendly and are often compared to Aussies for their laid back approach and sense of humour. Another attraction of Canada aside from the skiing, is the proliferation of hot springs in the Columbia Valley. What better way to sooth and rejuvenate your body and soul.



CountryMap



Canada offers the most unforgettable encounters with nature. Explore its rugged woodlands, tranquil islands, secluded beaches and scenic mountains or experience the cosmopolitan cities, colourful history and diverse cultures.

VANCOUVER

Vancouver is one of the few places in the world where you can ski in the morning and sail in the afternoon. Named the world's "Most Liveable City" and a Top 100 World Destination pick in Trip Advisor's 2008 Traveller's Choice Awards, Vancouver offers travellers both outstanding opportunities for outdoor adventure and the sophisticated amenities of a world-class city.

- Stanley Park
- Grouse Mountain
- Capilano Suspension Bridge
- Robson Street
- Chinatown and markets
- Canucks Hockey Games

VICTORIA AND VANCOUVER ISLAND

From a rich heritage of native culture preserved for eternity in museums, to the contemporary bustle of festivals and local events, Vancouver Island offers a year-round pageant of history, arts and lively entertainment.

- Butchart Gardens
- Whale Watching
- Golf on Vancouver Island
- Spa and Wellness Centres

SNOW TRAIN TO JASPER

A perennial favourite all year long, the Canadian is your key to the perfect winter getaway. In VIA's award-winning Silver & Blue sleeper class, luxury and stunning vistas await as you travel to the heart of the Rockies. You'll enjoy high-class accommodation, superb gourmet meals, and breathtaking 360-degree views of the Rockies while in the glass-domed Panorama car. What better way to prime your senses for a thrilling winter getaway?

2010 OLYMPIC AND PARALYMPIC WINTER GAMES

Look to Metro Vancouver for venues that will host ceremonies, covered ice events and cultural festivities. Cypress Mountain, towering over Vancouver will host freestyle skiing and snowboard events. Alpine skiing, biathlon, cross-country skiing, bobsleigh and luge will be run in Whistler.

SNOWMOBILE ADVENTURES

Join Canadian Snow Mobile Adventures for the highlight of your winter vacation to Whistler. With plenty of tours departing daily from Whistler Village there is an adventure suitable for all levels of outdoor spirit and capabilities.

- Fitzsimmons Creek
- Wilderness Run
- Fondue by Snowmobile
- Dogsledding

BANFF AND JASPER TOURS

- Maligne Canyon Icewalk
- Heli-snowshoe adventures
- Icefields Parkway Glacier
- Pyramid Lakes Sleigh Rides
- Johnston
- Banff Wildlife Tours

For stop-overs in Los Angeles and San Francisco refer pages 24/25 and for stop-overs in Tokyo or Hong Kong refer to pages 48/49.



Vancouver Canucks in action



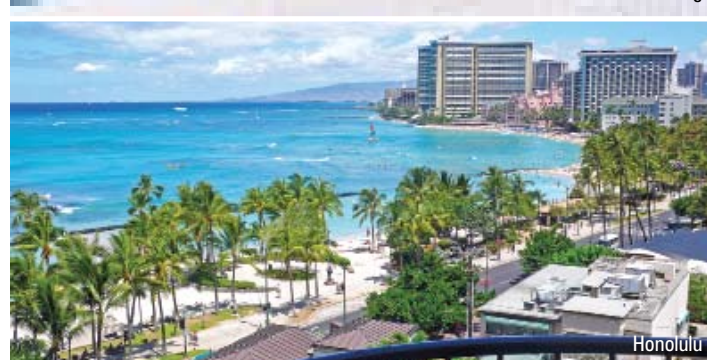
Butchart Gardens, Victoria



Jasper Snow Train



Snowmobiling



Honolulu



San Francisco streets



Golf in Vancouver



Nestled amid the spectacular Coast Mountains of BC and 120kms north of Vancouver you will find the two mammoth mountains (Whistler & Blackcomb) and one spectacular village. Combined, they form 12 massive alpine bowls, including 3 glaciers – the largest ski area on the continent. In Whistler Village there are apres activities to keep you busy well into the night incl 150 retail shops and over 90 bars and restaurants. Whistler has been rated the No.1 Ski Resort in North America.



Big White is Canada's largest totally ski-in/ski-out resort village with some of the best snow falls in the country, averaging 7.5 meters a year! Besides all that snow and some of the best skiing and boarding around, Big White is also home to the NEW Happy Valley Theme Park, giving people more apres activities to do on their holiday. For great snow, great skiing and the most fun, take the whole family for a BIG ADVENTURE at BIG WHITE!



Nestled at the foot of the mountain, Silver Star Village will charm you with its colourful Victorian facades, traditional shops and walkways. Blessed with dry Okanagan powder and legendary sunshine, Silver Star boasts a 30 year record of annual snowfalls of 5-7m with some of the most varied ski terrain in Western Canada. Family activities and apres ski choices are endless...Silver Star is popular with skiers who like short lift line-ups, want good powder snow and value for money.

mountain facts

Ski Terrain: 8171 acres, over 200 marked trails, 12 alpine bowls with 3 glaciers
Elevation: Top 2182m, Base 675m (Whistler), Top 2284m, Base 675m (Blackcomb)
Difficulty: (W) Beginner 20%, Intermediate 55%, Advanced 25%, (B) Beginner 15%, Intermediate 55%, Advanced 30%
Vertical: 1530m (W), 1609m (B)
Longest Run: 11km
Snowfall: 10.2m annual average

Ski Terrain: 7155 acres, 118 designated trails,
Elevation: Summit 2319m, Village centre 1755m, Gem Lake Base 1508m
Difficulty: Beginner 18%, Intermediate 56%, Expert 26%
Vertical: Vertical drop 777m
Longest Run: 7.2km
Snowfall: 7.5m annual average

Ski Terrain: 3065 acres, 115 marked downhill runs
Elevation: Top 1915m, Bottom 1155m, Village 1609m
Difficulty: Easiest 20%, More difficult 50%, Most difficult 20%, Extreme 10%
Vertical: 760m
Longest Run: 8km
Snowfall: 7m annual average

getting there

- Gateway: Vancouver
- Vancouver Airport – Whistler: Duration: approx 2 1/2 hours by coach

- Gateway: Kelowna
- Kelowna Airport - Big White. Duration: 1 hour

- Gateway: Kelowna
- Kelowna Airport - Silver Star Duration: 1 hour by coach

activities

- Heliskiing, snowmobiling, Cross country & Backcountry Tours, Night Skiing, Dog sledding, Paragliding, Scenic flights, Ice skating, Sleigh rides

- Night skiing, Cross country skiing, Ice skating, Tubing, Sleigh rides, Helicopter tours, FREE mountain guiding

- Tube town, Ice skating, Snowmobiling, Cross country, Snow shoeing, Indoor climbing wall, Sleigh rides, Dog sledding, Indoor swimming pool



Each winter when a snow-deep mantle of white covers the Canadian Rockies, Jasper casts its own magic spell. A destination of amazing contrasts, Jasper offers first class services and facilities within magnificent scenic wilderness and surroundings of unparalleled beauty. Jasper is perfectly suited for families and groups ensuring fun for all levels of skiers and boarders with its variety of runs from each lift point.



This ski area is renowned for its superb natural snow conditions, an 8.75m average snowfall. Powder, powder and more powder. Fernie boasts 114 trails, 5 bowls and acres of the best tree skiing around. At the bottom you will find 7 on-mountain lodges, 28 bars and restaurants to entertain you into the wee hours. A regular shuttle service runs from Fernie to Lake Louise, Kimberley and Panorama. At Fernie - it's steep, it's deep and generally uncrowded.



Revelstoke is a hidden gem offering epic Selkirk powder for serious adventure skiers and riders. No other resort in the world offers lift, cat, and heli skiing from one village area. Revelstoke is home to the longest vertical ski trail in North America. For a mountain with a relatively small number of lifts, the ski experience here will amaze you.

mountain facts

Ski Terrain: 1675 acres, 75 trails, high alpine, open bowls and chutes in the upper area
Elevation: Base 1697m, Top 2612m
Difficulty: Novice 30%, Intermediate 30%, Advanced 20%, Expert 20%
Vertical: 915m
Longest Run: 5.6km
Snowfall: 4m annual average

Ski Terrain: Over 2500 skiable acres, 114 defined trails, 5 alpine bowls, Tree skiing, 15km of cross country
Elevation: Base 1068m, Summit 1925m
Difficulty: Novice 30%, Intermediate 40%, Advanced 30%
Vertical: 857m
Longest Run: 5km
Snowfall: 8.7m annual average

Ski Terrain: 1500 acres
Elevation: Base 512m, Top 2225m
Difficulty: 10% Beginner, 43% Intermediate, 47% Advanced
Vertical: 1713m
Longest Run: 15.2km
Snowfall: 12-18m (historical snowfall measured in the Selkirk Mountains)
Lifts: 4

getting there

- Gateway: Calgary
- Calgary Airport - Jasper. Duration: 5 hrs
- Transfers included in package prices

- Gateway: Cranbrook or Calgary
- Cranbrook Airport - Fernie Duration: 1 1/2 hrs by coach

- Gateway: Kelowna & Kamloops
- 2 hour drive from Kelowna or Kamloops to Revelstoke

activities

- Columbia Ice fields tour, Ice skating, cross country & backcountry, sleigh rides, canyon crawling, ice climbing, heli-shoeing & tours, ice fishing, dog sledding, FREE mountain guiding, snowmobiling

- Snowcat skiing/boarding, cross country, dogsledding, snowmobiling, ice fishing, ice climbing & climbing wall, ice-skating, sleigh rides, snowshoeing

- Cat skiing, heli skiing, Nordic skiing, ice arena, historic museum, aquatic centre with hot tub, waterslide & climbing wall.



sun peaks

PAGE 18



Recognised for its abundant sunshine, dry and plentiful snow, superb grooming and an award winning trail and village design. Combining three mountains covering 3600 acres and soaring 3000 vertical feet and one ski-in/ski-out village. Try the Tube Park and back country cat skiing so you can spend the day tackling Tod Mountain powder bowls and glades and to make it easier to access there is now a direct airport shuttle from Vancouver to Sun Peaks.

Ski Terrain: 3678 acres of skiable terrain, 122 named runs, 12 gladed areas, Snowboard terrain park, Cross country
Elevation: Village 1255m, Burfield Base 1199m, Burfield Summit 2080m
Difficulty: Novice 10%, Intermediate 58%, Advanced 32%
Vertical: 881m
Longest Run: 8km
Snowfall: 5.6m annual average

- Gateway: Kamloops
- Kamloops - Sun Peaks. Duration: 1 hr by coach
- Alternative transfer service: Vancouver - Sun Peaks Duration: 6 hrs - Wed & Sat only

- Snowmobiling, snowshoeing, sleigh rides, dogsledding, fondue & torchlit descent, cat skiing, sports centre, hot tubs and ice rinks, kids adventure park with tobogganing.



banff/mt norquay

PAGE 21



The stunning town of Banff is where you will stay to ski at Lake Louise, Sunshine Village and the local mountain - Mt Norquay. All three mountains are accessible on one lift ticket offering skiers and snowboarders of any ability and countless challenges. Take the FREE shuttle from your hotel every morning to the ski area of your choice. The beautiful town of Banff has over 100 bars and restaurants on offer. Come to the place where the elk walk the snow covered streets as casually as the people!

Norquay Ski Area
Ski Terrain: 190 acres, 31 runs
Elevation: Base 1636m, Peak 2133m
Difficulty: Novice 20%, Intermediate 36%, Advanced 28%, Expert 16%
Vertical: 503m
Longest Run: 1.1km
Snowfall: 3m annual average

- Gateway: Calgary
- Calgary Airport - Banff Duration: 2 hrs by coach to Banff

- Columbia Ice fields Tours, Cross-country & backcountry skiing, Hot springs, Helicopter tours, Dog sledding, Snowmobiling, Ice fishing, Snowshoeing, Ice climbing, Sleigh rides, Night skiing at Norquay

lake louise

PAGE 22



For sheer grandeur, imaginative design and size, the Lake Louise area ranks with the finest ski resorts in the world. When it comes to reliable snow and length of season, Lake Louise is hard to beat. However, it's in its spectacular scenery where this area excels. After a hard day on the mountain, relax in the romantic village of Lake Louise which has world class accommodation accessed by regular complimentary shuttle service.

Ski Terrain: 4200 acres, 139 runs & back bowls, cross country trails, 'The Jungle' terrain park
Elevation: Base 1662m, Peak 2637m
Difficulty: Novice 25%, Intermediate 45%, Advanced 30%
Vertical: 991m
Longest Run: 8km
Snowfall: 4m annual average

- Gateway: Calgary
- Calgary Airport - Lake Louise Duration: 2½ hrs by coach to Lake Louise

- Columbia Ice fields Tours, Cross-country & backcountry skiing, Hot springs, Helicopter tours, Dog sledding, Snowmobiling, Ice fishing, Snowshoeing, Ice climbing, Sleigh rides, Ice skating

sunshine

PAGE 22



Famous for its abundant powder snow and its scenic setting in the heart of the Canadian Rockies, Sunshine Village offers 3168 skiable acres of terrain spread over three mountains - Lookout, Standish and Goat's Eye. Sunshine Village is only 15 minutes from the Town of Banff and offers numerous on-mountain restaurants & eateries, Ski & Snowboard School, Terrain Park, Ski & Snowboard Rental Centre, 3 retail shops and licensed daycare centre. Sunshine also features Banff's only ski-in/ski-out hotel, the Sunshine Inn.

Ski Terrain: 3168 skiable acres over 3 mountains, 107 runs, terrain park
Elevation: Base 1660m, Village 2160m, Peak 2730m
Difficulty: Novice 22%, Intermediate 31%, Advanced 42%, Expert 5%
Vertical: 1070m
Longest Run: 5km
Snowfall: 10m annual average

- Gateway: Calgary
- Calgary Airport - Banff Duration: 2 hrs by coach to Banff

- Columbia Ice fields Tours, Cross-country & backcountry skiing, Hot springs, Helicopter tours, Dog sledding, Snowmobiling, Ice fishing, Snowshoeing, Ice climbing, Sleigh rides

red resort

PAGE 23



Located in eastern BC, in the heart of the Kootenay Mountains, Red Mountain is BC's best kept secret. Red Mountain has achieved international recognition thanks to its awesome terrain and phenomenal snow quality. Red Mountain has earned a well deserved reputation as a hidden gem in British Columbia. Ski it for yourself and you will understand why. Red Mountain is a popular race training destination with first rate facilities, conditions and terrain.

Ski Terrain: 1685 acres, wide open groomers or steep, powder filled bowls, 87 runs
Elevation: 2266m
Difficulty: Beginner 10%, Intermediate 45%, Advanced 45%
Vertical: 880m
Longest Run: 7km
Snowfall: 7.5m annual average

- Gateway: Castlegar
- Castlegar Airport - Red Mountain Duration: 30 mins by taxi
- Transfers included in the package prices

- Hot springs, cross country, snowmobiling & backcountry, parapenting, massage, fitness & recreation centres, FREE mountain guiding, heli-skiing

kimberley



Locally admired for its consistently good conditions and fall line runs, Kimberley is becoming more recognised internationally, thanks to an impressive expansion program to its skiable area and lift service. Dubbed as the "Bavarian Alpine City" there is a general realisation that relaxation is a key ingredient to life which makes Kimberley one of the friendliest places you'll ever ski. Activities include night skiing, cross country skiing, snowshoeing, snowmobiling, helicopter sightseeing tours & taxi service, Kidz Rule evening programs, skating, FREE mountain guiding & more!

Ski Terrain: 1800 acres, 80 runs, gladed areas, cross country
Elevation: Base 1230m, Top 1981m
Difficulty: Novice 20%, Intermediate 45%, Advanced 35%
Vertical: 751m
Longest Run: 6.4km
Snowfall: 4m annual average

- Gateway: Cranbrook
- Cranbrook Airport - Kimberley. Duration: 45 mins by coach
- Transfers included in the package prices

panorama



For those passionate about mountain sports, Panorama offers the best active winter escape with family or friends, in a relaxing, uncrowded, intimate, smaller-by-design resort set among rugged mountain scenery. Panorama has 4000 vertical feet of skiing; 2800 skiable acres - the 3rd largest vertical and 3rd largest acreage in Canada. Panorama also has some great tree skiing for the more adventurous. Activities include heliskiing, hot springs, night skiing, snowmobiling, sleigh rides, tubing, cross country skiing, Ice skating, Dog sledding, paragliding, health club, and FREE mountain guiding.

Ski Terrain: 3000 acres ranging from powder bowls, glades, groomed cruisers & terrain parks.
Elevation: Base elevation 1160m, Top elevation 2380m
Difficulty: Beginner 15%, Intermediate / Advanced 55%, Expert 30%
Vertical: 1220m
Longest Run: 5km
Snowfall: 4m annual average

- Gateway: Calgary
- Calgary - Panorama. Duration: 2½ hrs by coach
- Transfers included in the package prices

kicking horse



Kicking Horse Mountain Resort is North America's newest and hottest ski resort. Located in Golden B.C., just 3 hours west of Calgary off the Trans Canada Highway, Kicking Horse Mountain Resort is nestled between the Rocky, Purcell and Selkirk Mountain ranges. The Golden Eagle Express Gondola takes skiers and riders to terrain that used to be available only to deep pocketed heli-skiers in just 12 minutes. Once there, you will find Canada's second highest vertical drop of 1260m and more than 2,750 acres (4000+ at build-out) of superb terrain. Activities include snowmobiling, ice climbing, snow shoeing, and cross country and telemark skiing.

Ski Terrain: 2750 acres, 106 runs
Elevation: Top of Kicking Horse 2450m, Mid mountain 1722m, Bottom of lowest chair 1190m
Difficulty: Beginner 20%, Intermediate 20%, Advanced 45%, Expert 15%
Vertical: 1260m
Longest Run: 14km
Snowfall: Lower mountain 2.5m, Mid mountain 3.6m, Summit snow stations 7m

- Gateway: Calgary
- Calgary - Kicking Horse: Duration: 3 hours

CALL ALPINE WORLD ON 1300 138 311 OR VISIT WWW.ALPINEWORLD.COM.AU FOR RATES ON ACCOMMODATION, LIFT PASSES AND TRANSFERS FOR CANADIAN SKI RESORTS



Whistler Blackcomb

Whistler Blackcomb is the premier ski resort located in Canada's Coast Mountain Range. A two hour drive from Vancouver, British Columbia, the resort is a major year-round tourism destination.

With a mile of vertical and an incredible backcountry, Whistler Blackcomb has been consistently ranked the No. 1 ski resort by ski industry and travel magazines. The mountains receive an average annual snowfall of over 10 metres. The Coast Mountain Range is one of the most heavily glaciated mountain ranges in the world. On Whistler Blackcomb alone, there are three glaciers to choose from: Blackcomb Glacier, Horstman Glacier, and Whistler Glacier.

The twin mountains offer 8,171 acres (3,307 hectares) of skiable terrain, ranging from beginner to expert slopes. Whistler and Blackcomb mountains also boast world-class terrain parks, a Superpipe and Family Zones. The regular ski and snowboard season lasts from mid-November to mid-May, with glacier skiing running until the end of July.

PEAK TO PEAK

The PEAK 2 PEAK Gondola travels 4.4 kilometres in just 11 minutes, transporting guests from Whistler's Roundhouse Lodge to Blackcomb Mountain, giving them unprecedented access to both mountains' expansive and unique high alpine terrain and spectacular vistas. Moving freely between the high alpine areas of both mountains skiers and riders will spend more of their day in the best weather and snow conditions.

SPECIALS

EARLYBIRD

- Save up to **35%** when you book by 15 Nov
- Book 5-8 days and get 1 additional day **FREE**
- Book 9 days and get 2 additional days **FREE**
- Book 10 days or more and get 3 additional days **FREE**

**Book by 15 Nov 2009 *Not valid 22 Dec to 1 Jan*

In Addition

- Rentals match **FREE** days, in addition to the 20% you already receive.

FAMILY SPECIAL

- Kids 12 & under ski **FREE** with the purchase of an adult ticket.
- Kids rent **FREE** with the purchase of an adult rental

**Can be sold in conjunction with Early Bird rates and must be booked before 15 Nov. After 15 Nov kids ski and rent FREE in conjunction with regular rates.*

**Not valid 22 Dec to 1 Jan. Conditions apply*

LIFT PASSES & TRANSFERS	ADULT	YOUTH (13-18YRS)	CHILD (7-12YRS)
6 Day Liftpass from:	399	341	204
Transfers (one-way): Vancouver – Whistler	82	82	63 (6-12yrs)

**CALL ALPINE WORLD ON 1300 138 311 FOR RATES
ON MANY MORE PROPERTIES IN WHISTLER**



1. Blackcomb Lodge
2. Carleton Lodge
3. Cascade Lodge
4. Delta Whistler Village Suites
5. Evolution
6. Fairmont Chateau Whistler
7. First Tracks
8. Glacier Lodge
9. Hi Hostel
10. Hilton Whistler Resort & Spa
11. Holiday Inn Sunspree
12. Listel
13. Market Place
14. Marriott Residence Inn Whistler
15. Nita Lake Lodge
16. Pan Pacific Mountainside
17. Pan Pacific Village Centre
18. Pinnacle International Hotel
19. Stoney Creek - Lagoons
20. Stoney Creek Northside
21. Summit Lodge & Spa
22. Tantalus Resort Lodge
23. The Aspens on Blackcomb
24. The Legends
25. The Westin Resort & Spa
26. Town Plaza Suites
27. Whistler Village Inn & Suites
28. Woodrun

The Westin Resort & Spa

BLACK DIAMOND

Located just steps from both mountain gondolas, The Westin has luxurious junior, 1 and 2 bedroom furnished suites with soaker tub, fireplace and well-appointed kitchen. Amenities include a restaurant, lounge and the Avello Spa & Health club which includes indoor/outdoor pool, whirlpools, steam room, sauna, yoga and Pilates.



ROOM TYPE	STUDIO	1BRM	2BRM
No. Sharing	2	2	6
CALL FOR RATES			

Pan Pacific Mountainside

PREMIER

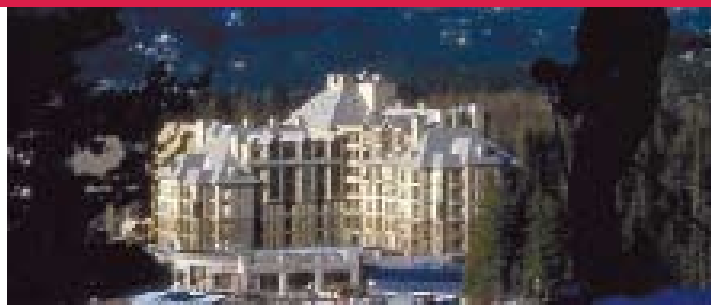
Whistler's best address offers unsurpassed ski-in/ski-out location, just steps to both Whistler and Blackcomb gondolas. All suites are complete with full kitchens, gas fireplace, balcony, floor to ceiling windows and deluxe Aveda salon amenities.

SPECIALS

- Earlybird- 1 Book by 31st Aug and receive a complimentary upgrade to a mountain view suite. Not valid 18th Dec - 2nd Jan & 11th - 28th Feb 2010
- Earlybird- 2 Book by 31st Aug and stay 14 pay 10, stay 7 pay 5. Not valid 18th Dec - 2nd Jan & 11th - 28th Feb 2010
- Earlybird- 3 Book by 15th Nov and stay 14 pay 11, stay 10 pay 7. Not valid 18th Dec - 2nd Jan & 11th - 28th Feb 2010
- Early Payment Bonus- Pay for Earlybird 1 or 2 by 15th Sept 2009 & save 5%.
- Special- Stay 5 pay 4. Not valid 18th Dec - 2nd Jan & 11th - 28th Feb 2010

ROOM TYPE	STUDIO	1BRM	2BRM
No. Sharing	2	2	4
18th Dec - 24th Dec	431	570	847
25th Dec - 2nd Jan	934	1159	1730
3rd Jan - 10th Feb	431	639	1037
11th Feb - 28th Feb	985	1193	1730
1st Mar - 3rd Apr	431	639	1037

Child 18Yrs and Under FOC.



Pan Pacific Village Centre

PREMIER

The newest and hottest ski resort in Whistler. The hotel offers the ultimate in luxury where guests can revitalize at the boutique spa, relax at the outdoor heated lap pool or enjoy one of the outdoor hot tubs, all with spectacular views of the idyllic mountains.

SPECIALS

- Earlybird- 1 Book by 31st Aug and receive a complimentary upgrade to an upper floor suite. Not valid 18th Dec - 2nd Jan & 11th - 28th Feb 2010
- Earlybird- 2 Book by 31st Aug and stay 14 pay 10, stay 7 pay 5. Not valid 18th Dec - 2nd Jan & 11th - 28th Feb 2010
- Earlybird- 3 Book by 15th Nov and stay 14 pay 11, stay 10 pay 7. Not valid 18th Dec - 2nd Jan & 11th - 28th Feb 2010
- Early Payment Bonus- Pay for Earlybird 1 or 2 by 15th Sept 2009 & save 5%.
- Special- Stay 5 pay 4. Not valid 18th Dec - 2nd Jan & 11th - 28th Feb 2010

ROOM TYPE	1BRM	2BRM
No. Sharing	2	4
18th Dec - 24th Dec	518	778
25th Dec - 2nd Jan	1159	1661
3rd Jan - 10th Feb	518	882
11th Feb - 28th Feb	1159	1661
1st Mar - 3rd Apr	518	882

Child 18Yrs and Under FOC.



Hilton Whistler Resort & Spa

PREMIER

Relax and unwind at the luxurious, award winning Hilton Whistler Resort & Spa. The hotel is ideally located in the heart of Whistler Village. Named by Condé Nast as the 10th top resort hotel in Canada, the hotel is steps away from the chairlifts of the legendary Whistler & Blackcomb Mountains. The hotel offers an array of world class restaurants, stylish boutiques, and buzzing nightlife at our doorstep. The Hilton boasts spacious guestrooms that have been designed with mountain style incorporating many natural elements into its design.

ROOM TYPE	HILTON	1BRM	2BRM
No. Sharing	*4	*4	4*
18th Dec - 24th Dec	136	171	253
25th Dec - 1st Jan	210	284	457
2nd Jan - 4th Feb	129	164	246
5th Feb - 28th Feb	n/a	n/a	n/a
1st Mar - 9th Mar	123	158	240

*rates are p.p. Child 18Yrs and Under FOC.

SPECIALS

- Earlybird- Book by 15th Nov and stay 5 pay 4. Not valid 19th Dec - 2 Jan 2010
- Special- Stay 10 pay 7 in 1BRm, 2BRm & Mountain Suites. Not valid 19th Dec - 2 Jan 2010
- Special- Stay 10 pay 7 in Hilton rooms all season.



Delta Whistler Village Suites

DELUXE

Located in the heart of Whistler Village approx. 6 minutes walk to the Gondolas. Fully equipped kitchens. Rooms feature fireplaces and en-suite washer/dryer. Amenities include health club, indoor and outdoor hot tubs, sauna, steam room and indoor and outdoor pool.

ROOM TYPE	DELTA	1BRM	2BRM
No. Sharing	*2	4	6
21st Nov - 23rd Dec	100	236	416
24th Dec - 1st Jan	274	819	1386
2nd Jan - 6th Feb	145	414	719
7th Feb - 28th Feb	n/a	n/a	n/a
1st Mar - 4th Apr	169	490	824

*rates are p.p. Child 18Yrs and Under FOC.

SPECIALS

- Earlybird- Book by 15th Nov and save 5%. Not valid 24th Dec - 1st Jan & 10th - 21st Mar 2010
- Special- Stay 7 pay 6, stay 9 pay 7, stay 14 pay 11. Not valid 24th Dec - 1st Jan 2010



Holiday Inn SunSpree

DELUXE

Be in the middle of it all. Central Whistler Village hotel location provides you with easy access to everything Whistler has to offer. Whistler's Holiday Inn SunSpree® Hotel is steps from ample shopping, dining and exciting nightlife. When you are ready to head up the mountains you are an easy 5-minute walk to Whistler Blackcomb's Village lifts. Choose from studios, 1 or 2 bedroom suites with kitchen facilities. Each of our Holiday Inn SunSpree® Whistler hotel rooms and suites offer a variety of amenities. Some rooms feature dens, lofts and balconies.

ROOM TYPE	STUDIO
No. Sharing	4
24th Dec - 2nd Jan	568
3rd Jan - 1st Feb	333
2nd Feb - 28th Feb	n/a
1st Mar - 8th Mar	333
9th Mar - 23rd Mar	n/a

Child 18Yrs and Under FOC.



Summit Lodge & Spa

DELUXE

Located minutes away from the mountain gondolas. Suites offer fully equipped kitchenettes, fireplaces, TV & VCR and balconies. Amenities include 24hour reception, ski shuttle to gondolas & lifts, ski storage, sauna, heated pool and hot tub.

ROOM TYPE	STUDIO
No. Sharing	2
24th Dec - 31st Dec	575
1st Jan - 31st Jan	324
1st Feb - 10th Feb	384
11th Feb - 28th Feb	n/a
1st Mar - 31st Mar	384



SPECIALS

- Earlybird- Book by 15th Nov. and stay 7 pay 6, stay 10 pay 7. Not valid 25th - 31st Dec 2009
- Special- Stay 10 pay 9. Not valid 25th - 31st Dec 2009

Child 18Yrs and Under FOC

Blackcomb Lodge

MODERATE

Recently reopened after completing a \$5million dollar renovation. There is a 24 hour front desk, internet access in all rooms and a common indoor pool, hot tub and sauna. Each guest room features a full kitchen, 27" TV with a DVD player. Close to all the shops, restaurants, art galleries and pubs.



ROOM TYPE	STUDIO	LOFT ROOM
No. Sharing	2	4
19th Dec - 25th Dec	390	542
26th Dec - 1st Jan	527	696
2nd Jan - 11th Feb	270	362
12th Feb - 28th Feb	CALL FOR RATES	
1st Mar - 26th Mar	310	379

SPECIALS

- Earlybird- Book by 15th Nov and stay 7 pay 5, stay 4 pay 3. Not valid 19th Dec - 1st Jan & 12th-28th Feb 2010

Child 18Yrs and Under FOC.

Stoney Creek - Lagoons

MODERATE

Beautifully designed complex located in Whistler's Village north and 10 minutes walk to the lifts or jet shuttle. Featuring living area, fireplace, TV/VCR, jet tub, washer/dryer and heated underground parking.



ROOM TYPE	STUDIO	1BRM	2BRM
No. Sharing	2	4	6
19th Dec - 24th Dec	263	365	558
25th Dec - 2nd Jan	507	731	1015
3rd Jan - 2nd Feb	263	365	558
3rd Feb - 1st Mar	771	863	1744
2nd Mar - 4th Apr	336	411	740

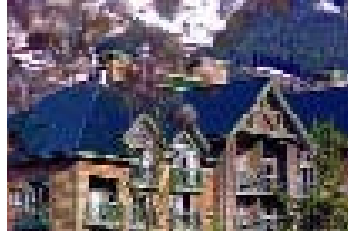
SPECIALS

- Earlybird 1- Book by 30th Sept and receive FOC Fresh Tracks tickets p.person
- Earlybird 2- Book by 15th Nov. and get every 3rd night FREE. Not valid 3rd Feb-1st Mar 2010

Pinnacle International Hotel

MODERATE

Just the right mix of the features you need and the luxury you expect: fireplace, private balcony, comfortable furnishings and a double jacuzzi soaker tub. Be impressed by the warmth and comfort of the rooms.



ROOM TYPE	STUDIO	
No. Sharing	2	
12th Dec - 24th Dec	241	
25th Dec - 1st Jan	518	
2nd Jan - 30th Jan	241	
1st Feb - 28th Feb	CALL FOR RATES	
1st Mar - 9th Apr	241	

SPECIALS

- Earlybird- Book by 15th Nov. and stay 7 pay 6, stay 14 Pay 11. Not valid 28th - 31st Dec 2009

Child 12Yrs and Under FOC.

Cascade Lodge

MODERATE

An ideal location being both quiet and within fantastic proximity to many of the Village's most popular night life. The ski lifts are approx. 10-15 mins walk away. Hotel features include ski storage, laundry, heated pool, hot tubs, exercise facility and parking.



ROOM TYPE	STUDIO	1BRM	2BRM
No. Sharing	2	4	6
18th Dec - 24th Dec	263	380	558
25th Dec - 2nd Jan	507	762	1015
3rd Jan - 2nd Feb	263	380	558
3rd Feb - 1st Mar	771	863	1744
2nd Mar - 4th Apr	336	426	740

SPECIALS

- Earlybird 1- Book by 30th Sept and receive FOC Fresh Tracks tickets p.person
- Earlybird 2- Book by 15th Nov. and get every 3rd night FREE. Not valid 3rd Feb-1st Mar 2010

Rates include Buffet Breakfast. Child 18Yrs and Under FOC.

Listel

MODERATE

Located just a few minutes from the ski lifts. Rooms feature hair dryers, fridge, cable TV, clock radio and complimentary tea and coffee. Facilities include restaurant and bar, outdoor Jacuzzi, heated outdoor pool, saunas and business facilities.



ROOM TYPE	STANDARD ROOM		
No. Sharing	*2	*3	*4
19th Dec - 25th Dec	129	103	90
26th Dec - 2nd Jan	268	196	160
3rd Jan - 5th Feb	129	103	90
6th Feb - 28th Feb	n/a	n/a	n/a
1st Mar - 27th Mar	164	126	108

SPECIALS

- Earlybird- Book by 15th Dec and stay 7 pay 6, stay 10 pay 8. Not valid 6th - 28th Feb 2009
- Special- Stay 14 pay 12. Not valid 6th - 28th Feb 2009

*Rates are p.p. Child 18Yrs and Under FOC.

Carleton Lodge

MODERATE

Located directly at the base of high-speed gondolas for both Whistler and Blackcomb. The Carleton Lodge is a unique condo style Whistler Village hotel offering five stories of spacious apartments. All suites feature a fully equipped kitchen, fireplace, cable television with VCR, washer and dryer, Jacuzzi bathtub and great views.



ROOM TYPE	1BRM	2BRM	3BRM
No. Sharing	2	4	6
CALL FOR RATES			

Stoney Creek North Star

MODERATE

Stoney Creek North Star features a very popular location with an eight-minute walk to the lifts, a short walk to the Telus Whistler Conference Centre and all Village attractions. Across the street you'll find the Marketplace mall, with both a grocery and liquor store.



ROOM TYPE	1BRM	2BRM
No. Sharing	4	6
18th Dec - 24th Dec	365	558
25th Dec - 2nd Jan	731	1015
3rd Jan - 2nd Feb	365	558
3rd Feb - 1st Mar	863	1744
2nd Mar - 4th Apr	411	740

SPECIALS

- Earlybird 1- Book by 30th Sept and receive FOC Fresh Tracks tickets p.person
- Earlybird 2- Book by 15th Nov. and get every 3rd night FREE. Not valid 3rd Feb-1st Mar 2010

Whistler Village Inn & Suites

MODERATE

This boutique hotel offers an exclusive 'Great Mountain Mornings' FREE breakfast bar, spacious air conditioned rooms, with world class amenities to create an experience that will exceed the expectations of guests accustomed to the highest level of quality and service.



ROOM TYPE	HOTEL ROOM	STUDIO
No. Sharing	*4	*4
19th Dec - 2nd Jan	116	128
3rd Jan - 31st Jan	77	87
1st Feb - 7th Feb	96	107
8th Feb - 4th Mar	104	116
5th Mar - 31st Mar	96	107

*Rates are p.p. Child 12Yrs and Under FOC.

Market Place

MODERATE

Convenient location and superb value. Ski lifts within 350 meters walking distance. Lodge amenities include common laundry facilities, & covered-outdoor, hot tub. The condos boast a cosy gas fireplace, & private balcony, while some offer an in-suite washer/dryer, and/or air conditioning.



ROOM TYPE	STUDIO	1BRM	1BRM DEN
No. Sharing	2	4	6
18th Dec - 24th Dec	231	292	395
25th Dec - 2nd Jan	474	650	810
3rd Jan - 2nd Feb	231	292	395
3rd Feb - 1st Mar	771	863	1744
2nd Mar - 4th Apr	307	365	455

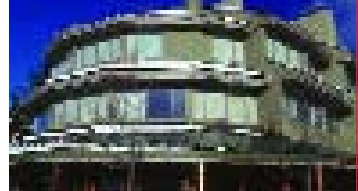
SPECIALS

- Earlybird 1- Book by 30th Sept and receive FOC Fresh Tracks tickets p.person
- Earlybird 2- Book by 15th Nov. and get every 3rd night FREE. Not valid 3rd Feb-1st Mar 2010

Town Plaza Suites

MODERATE

Lovely condos in Whistler Village, offering spacious 2 bedroom units. Shops and dining are at your doorstep, with lifts to both mountains just a short walk away. Rooms include cable TV, VCR, fireplace, full kitchen.



ROOM TYPE	STUDIO	1BRM	2BRM
No. Sharing	2	4	6
18th Dec - 24th Dec	231	292	499
25th Dec - 2nd Jan	474	650	947
3rd Jan - 2nd Feb	231	292	499
3rd Feb - 1st Mar	771	863	1744
2nd Mar - 4th Apr	307	365	600

SPECIALS

- Earlybird 1- Book by 30 Sept & receive FOC Fresh Tracks tickets p/person p/room
- Earlybird 2- Every 3rd night free. Book by 15 Nov. Not valid 3 Feb-1 Mar 2010

Tantalus Resort Lodge

VALUE

Just a 5 minute walk to both mountains' gondolas. A comfortable and contemporary lodge perfect for families and singles. The suites are large and spacious.



ROOM TYPE	2BRM SUITE
No. Sharing	6
18th Dec - 25th Dec	518
26th Dec - 2nd Jan	916
3rd Jan - 2nd Feb	483
3rd Feb - 3rd Mar	n/a
4th Mar - 4th Apr	535

SPECIALS

- Earlybird- Stay 7 Pay 6, Stay 10 Pay 8, Stay 14 Pay 11. Book by 15 Nov. Not valid 18 Dec - 2 Jan 2010.
- Special- Book after 15 Nov & receive a 5% discount. Minimum 10 night stay.
- Special- Book after 15 Nov & receive a 10% discount. Minimum 11 night stay.

Child 17Yrs and Under FOC

Fairmont Chateau Whistler

BLACK DIAMOND

Located only steps away from the base of Blackcomb Mountain and minutes from Whistler Mountain, this landmark hotel offers the finest in service and quality. Guestrooms include in-room coffee and tea facilities, hair dryers, TV with video checkout, in-house movies and video games, full bathrooms and mini bar. Amenities include restaurants, lounge, health club and full service spa.

ROOM TYPE	F/MONT	S/SIDE	1BRM	GOLD 1BRM
No. Sharing	*2	*2	*2	*2
18th Dec - 24th Dec	353	492	483	622
25th Dec - 2nd Jan	594	767	1131	1399
3rd Jan - 10th Feb	262	401	392	531
11th Feb - 28th Feb	n/a	n/a	n/a	n/a
1st Mar - 5th Apr	353	492	483	622

*Rates are p.p. Child 18Yrs and Under FOC.

SPECIALS

- Earlybird- Book by 15th Nov and receive \$800 food & beverage credit or an upgrade to a Deluxe room
- Special- Stay 5 pay 4, stay 10 pay 8, stay 14 pay 11. Valid Fairmont & Deluxe only. Not Valid 26th Dec - 4th Jan 2010



Marriott Residence Inn Whistler

PREMIER

Residence Inn by Marriott is a spectacular, lodge-style Whistler hotel located next to the ski slopes on Blackcomb Mountain and just a short walk to Whistler Village. Hotel facilities include slope-side hot tub, pool, local restaurant delivery, in-room shopping service, wireless internet, shuttle service, ski valet and equipment storage. Spacious suites combine comfort and functionality and come equipped with full kitchen, cable TV, gas fireplace, balcony, pull-out sofa and include free hot buffet breakfast.



ROOM TYPE

No. Sharing

PLEASE CALL FOR RATES

Woodrun

DELUXE

Woodrun condos are a true ski-in/ski-out alpine paradise. With flat screen TV/DVD, video/games/puzzles library, fully equipped kitchen with heated floors, gas fireplace, private laundry and fitness room in the complex – the most work you will need to do is click on your skis!!



ROOM TYPE	1BRM/DEN	2BRM
No. Sharing	6	6
26th Nov - 17th Dec	382	424
18th Dec - 24th Dec	514	619
25th Dec - 2nd Jan	1002	1199
3rd Jan - 2nd Feb	514	619
3rd Feb - 1st Mar	1744	1744
2nd Mar - 4th Apr	663	802

SPECIALS

- Earlybird 1- Book by 30th Sept and receive FOC Fresh Tracks tickets p.person
- Earlybird 2- Book by 15th Nov. and get every 3rd night FREE. Not valid 3rd Feb-1st Mar 2010

Glacier Lodge

DELUXE

A luxury resort within easy walking distance to the village. Accommodation is lavishly decorated, each with fireplace, balcony and spacious bathrooms. Facilities include heated pool, spas, restaurants and bars.



ROOM TYPE	HOTEL STUDIO	1BRM	2BRM
No. Sharing	*2	2	4
18th Dec - 24th Dec	116	307	395
25th Dec - 2nd Jan	197	507	778
3rd Jan - 2nd Feb	116	307	395
3rd Feb - 1st Mar	386	771	863
2nd Mar - 3rd Apr	146	351	499

*Rates are p.p.

SPECIALS

- Earlybird 1- Book by 30th Sept and receive FOC Fresh Tracks tickets p.person
- Earlybird 2- Book by 15th Nov. and get every 3rd night FREE. Not valid 3rd Feb-1st Mar 2010

The Aspens on Blackcomb

DELUXE

Offering ski-in/ski-out convenience within walking distance of Blackcomb Upper Village, Wizard Express and Whistler Village. Spacious 1 & 2 bedroom suites feature gas fireplace, TV/VCR, balcony or patio and a fully equipped kitchen, facilities include heated pool, 2 outdoor hot tubs, exercise room and common laundry.



ROOM TYPE	1BRM	2BRM	2BRM+DEN
No. Sharing	4	6	6
18th Dec - 24th Dec	395	619	707
25th Dec - 2nd Jan	778	1199	1366
3rd Jan - 2nd Feb	395	619	707
3rd Feb - 1st Mar	863	1744	2387
2nd Mar - 4th Apr	499	802	925

SPECIALS

- Earlybird 1 - Book by 30th Sept and receive FOC Fresh Tracks tickets p.person
- Earlybird 2 - Book by 15th Nov. and get every 3rd night FREE. Not valid 3rd Feb-1st Mar 2010

WhistlerCreek

Whistler Creek, also known as 'Creekside', was the original home base of Whistler Mountain when the mountain first opened in 1966. Creekside has its own gondola and is home to the legendary locals favourite apres spot Dusty's Bar and BBQ. Creekside offers a wide range of accommodation options and is only a five minute drive from the main Whistler Village base.

Evolution

PREMIER

Evolution is uniquely designed and furnished to give you the best of both worlds. Tastefully balancing comfort and style, these sophisticated resort homes offer open floor plans that create versatile living spaces.



ROOM TYPE	1BRM	2BRM
No. Sharing	2	4
27th Nov - 17th Jan	241	327
18th Dec - 2nd Jan	639	899
3rd Jan - 31st Jan	397	518
1st Feb - 28th Feb	n/a	n/a
1st Mar - 4th Apr	431	570
5th Apr - 24th Apr	241	327

Rates based on 7 nights or more. Child 18Yrs and Under FOC.

SPECIALS

- Earlybird- Book by 15th Nov and stay 5 pay 4, stay 13 pay 10. Not valid 18th Dec - 2 Jan & 1-28 Feb 2010

Nita Lake Lodge

DELUXE

Nita Lake Lodge is nestled in Whistler's Creekside, on the quiet shores of Nita Lake. Unique in character, unlike any other Whistler hotel or lodge there are a number of exceptional amenities and services that make it an unforgettable experience.



ROOM TYPE	STUDIO	1BRM	2BRM
No. Sharing	2	2	4
25th Nov - 17th Dec	232	284	388
18th Dec - 23rd Dec	336	388	648
24th Dec - 3rd Jan	648	778	1037
4th Jan - 31st Jan	336	388	648
1st Feb - 28th Feb	n/a	n/a	n/a
1st Mar - 10th Apr	336	388	648

SPECIALS

- Earlybird- Book by 15th Nov and stay 4 pay 3, stay 10 Pay 7.

First Tracks Lodge

DELUXE

First Tracks Lodge, with ski-in/ski-out access next to the Creekside express gondola. The luxurious suites may include private balconies in suite and cosy fireplaces while the common area contains a pool and fitness centre.



ROOM TYPE	1BRM	2BRM	3BRM
No. Sharing	2	4	6
27th Nov - 17th Dec	258	345	449
18th Dec - 2nd Jan	691	985	1436
3rd Jan - 31st Jan	414	552	656
1st Feb - 28th Feb	n/a	n/a	n/a
1st Mar - 4th Apr	483	622	743
5th Apr - 24th Apr	258	345	449

Rates based on 7 nights or more. Child 18Yrs and Under FOC.

SPECIALS

- Earlybird- Book by 15th Nov and stay 5 pay 4, stay 13 pay 10. Not valid 18th Dec - 2 Jan & 1-28 Feb 2010

Legends

DELUXE

Located in Whistler creek, the architecture of Legends is classic Whistler Creek part cabin, part lodge all character rock and timber. There is sophistication about the interior with more than a hint of the eclectic.



ROOM TYPE	1BRM	2BRM	3BRM
No. Sharing	2	4	6
27th Nov - 17th Dec	223	293	414
18th Dec - 2nd Jan	570	812	1159
3rd Jan - 31st Jan	345	449	570
1st Feb - 28th Feb	n/a	n/a	n/a
1st Mar - 4th Apr	379	518	656
5th Apr - 24th Apr	223	293	414

Rates based on 7 nights or more. Child 18Yrs and Under FOC.

SPECIALS

- Earlybird- Book by 15th Nov and stay 5 pay 4, stay 13 pay 10. Not valid 18th Dec - 2 Jan & 1-28 Feb 2010

Hi Hostel

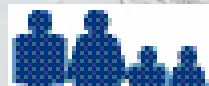
BUDGET

The HI-Whistler hostel provides the perfect winter or summer retreat for Guests looking to get away from the bustling city life. Located on picturesque Alta Lake, this rustic lodge is at nature's back door and is only a 10-minute drive from Whistler village and Whistler/Blackcomb. After a day on the slopes, warm up in the hostel's sauna or relax by the fireplace.



ROOM TYPE	SHARED DORM
No. Sharing	
1st Nov - 4th Feb	41
5th Feb - 2nd Mar	n/a
3rd Mar - 31st Mar	41

Maximum 7 night stay.



If you're after fantastic snow, don't look any further than Big White. With the well deserved motto of 'It's the Snow', Big White has an annual average snowfall of over 7 metres of Okanagan 'champagne powder'. The bountiful, dry powder is legendary and was awarded "Best Powder" by Ski Canada Magazine in 2008!

Located in the picturesque Okanagan Valley, Big White is uniquely blessed with sunny weather, dry powder and a mild average temperature of -5°C. With 118 runs fanning from the summit, 2,565 acres of skiable terrain, and 16 lifts, there's a great selection of terrain for everyone with deep powder bowls, wide-open glades, and great fall-line cruising. For the ultimate park experience, head to the award winning TELUS Terrain Park which is the best progressive park in North America. To top it off, slalom through the spectacular 'Snowghosts' (snow caked trees) which create a magical backdrop in our winter playground.

As the largest totally ski-in/ski-out ski resort in Canada, you can experience the luxury of stepping straight out onto the slopes from our fantastic range of accommodation. There's something for everyone whether it's a luxurious self contained vacation home with a private hot tub, a cozy condominium or a welcoming hotel suite. Whatever you're after, Big White has the ingredients for a memorable vacation.

SPECIALS

SEASON PASSES

- **EARLYBIRD** book and pay by 14 Sept
 - Individual: ADULT \$826 YOUTH (3-18yrs) \$564 CHILD (6-12yrs) \$352
 - Family*: ADULT \$698 YOUTH (3-18yrs) \$474 CHILD (6-12yrs) \$288
- **PRE-SEASON** book and pay by 31 Oct
 - Individual: ADULT \$1063 YOUTH (3-18yrs) \$724 CHILD (6-12yrs) \$461
 - Family*: ADULT \$871 YOUTH (3-18yrs) \$576 CHILD (6-12yrs) \$371
- **REGULAR** Book and pay on or after 1 Nov
 - Individual: ADULT \$1358 YOUTH (3-18yrs) \$1050 CHILD (6-12yrs) \$653
 - Family*: No savings available.

*A family must consist of 3 or more members.

LIFT PASSES

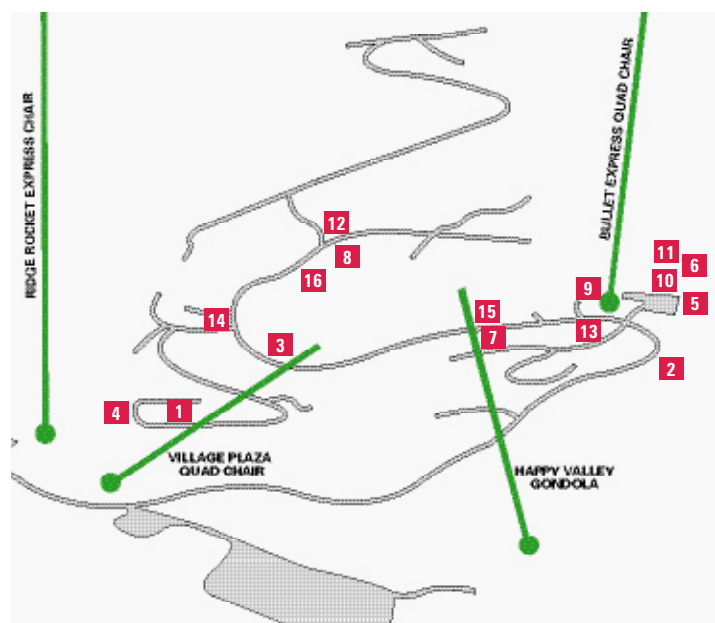
- Purchase 5 or 6 days and get 1 additional day **FREE**
- Purchase 7,8 or 9 days and get 2 additional days **FREE**
- Purchase 10 or more days and get 3 additional days **FREE**
Valid Dec 4-26 and Jan 3 to Apr 18. Conditions apply.

FAMILY SPECIAL

- Children 15yrs and under ski **FREE**
Valid Dec 4-26 and Jan 3 to Apr 18. Conditions apply.
- Children 15yrs and under rent **FREE**
Valid Mar 28 to Apr 18. Conditions apply.

LESSONS

- Purchase 1 lesson and receive a 2nd Lesson **FREE**
Valid Mar 28 to Apr 18. Conditions apply.



LIFT PASSES & TRANSFERS	ADULT	YOUTH (13-18YRS)	CHILD (6-12YRS)
6 Day Liftpass from:	370	309	170
Transfers (one-way): Kelowna - Big White	54	54	38

CALL ALPINE WORLD ON 1300 138 311 FOR RATES ON MANY MORE PROPERTIES IN BIG WHITE

- | | |
|-------------------------|---------------------------------|
| 1. Black Bear | 9. Stonebridge Lodge |
| 2. Bullet Creek Condos | 10. Sundance Resort |
| 3. Chateau Big White | 11. Sundance Townhomes & Cabins |
| 4. Chateau on the Ridge | 12. The Inn at Big White |
| 5. Copper Kettle Lodge | 13. Towering Pines |
| 6. Feathertop | 14. Trappers Crossing |
| 7. Grizzly Lodge | 15. White Crystal Inn |
| 8. Ptarmigan Inn | 16. Whitefoot Lodge |

Feathertop BLACK DIAMOND

At Feathertop, the full mountain experience is right outside your doorstep. Ski-in/ski-out with easy access to not one but two express chairs. Wander to the village in a matter of minutes. Savour the views of the snow-capped peaks of the Monashee Mountains. Enjoy all this while you are part of a quiet, exclusive neighbourhood.

ROOM TYPE	3BR	3BR & DEN	5BR & DEN
No. Sharing	10	11	15
1st Dec - 15th Dec	797	1119	1618
16th Dec - 26th Dec	996	1399	2022
27th Dec - 5th Jan	1245	1748	2528
6th Jan - 15th Apr	797	1119	1618



Sundance Townhomes & Cabins BLACK DIAMOND

Ski right up to your doorstep with these luxurious townhomes and cabins. The cabins and townhomes are a part of the Sundance resort and all feature rustic interiors with massive floor-to-ceiling stone fireplaces, gourmet kitchens and well-appointed bathrooms.

ROOM TYPE	2BRM CABIN	3BRM+ CABIN	4BRM+ CABIN
No. Sharing	4	6	6
18th Dec - 26th Dec	1268	1537	1634
27th Dec - 2nd Jan	1651	2003	2129
3rd Jan - 4th Feb	955	1159	1232
5th Feb - 27th Mar	1101	1336	1419
28th Mar - 17th Apr	892	1082	1150

Rates based on 5 nights or more. Child 18Yrs and Under FOC.



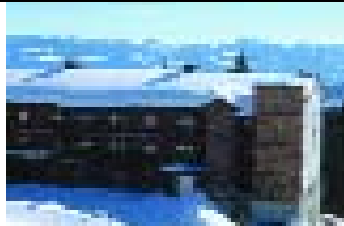
SPECIALS
• Special- Stay 14 pay 11, stay 10 pay 8, stay 7 pay 6. Not valid 27th Dec - 2nd Jan 2010

Copper Kettle Lodge BLACK DIAMOND

A recently built condominium complex, it is located at the end of a quiet cul-de-sac with an easy ski-in/ski-out access, literally just moments to the Black Forest Chairlift. It is a short walk to the village, close yet far enough away to be comfortably quiet, with one of the best ski in/ski out accesses at Big White Ski Resort.

ROOM TYPE	2BRM + PREM. W/ HOTTUB
No. Sharing	4
4th Dec - 17th Dec	398
18th Dec - 26th Dec	659
27th Dec - 2nd Jan	798
3rd Jan - 4th Feb	439
5th Feb - 27th Mar	574

Rates based on 5 nights or more. Child 18Yrs and Under FOC.



SPECIALS
• Special- Stay 14 pay 11, stay 10 pay 8, stay 7 pay 6. Not valid 27th Dec - 2nd Jan 2010

Stonebridge Lodge BLACK DIAMOND

Ski-in/ski-out access to the ski hill and village centre. Units feature gas fireplace, TV/VCR, phone, bathroom, balcony, kitchen and living room. Amenities available include pool and hot tub, ski storage and elevator.

ROOM TYPE	1BRM W/ HOTTUB	2BRM	2BRM W/ HOTTUB
No. Sharing	2	4	4
4th Dec - 17th Dec	340	402	436
18th Dec - 26th Dec	522	616	669
27th Dec - 2nd Jan	614	725	786
3rd Jan - 4th Feb	393	465	504
5th Feb - 27th Mar	441	521	565

Rates based on 5 nights or more. Child 18Yrs and Under FOC.




SPECIALS
• Special- Stay 14 pay 11, stay 10 pay 8, stay 7 pay 6. Not valid 27th Dec - 2nd Jan 2010

Sundance Resort PREMIER

Located at the base of the lift, Sundance has a great pool and BBQ area overlooking the slopes. Also features a kid's play room, its own cinema and lots more all within a short walk to the centre.

ROOM TYPE	STUDIO	1BRM	2BRM
No. Sharing	2	2	4
4th Dec - 17th Dec	203	306	402
18th Dec - 26th Dec	311	471	616
27th Dec - 2nd Jan	366	553	725
3rd Jan - 4th Feb	235	354	465
5th Feb - 27th Mar	264	398	521

Rates based on 5 nights or more. Child 18Yrs and Under FOC.



SPECIALS
• Special- Stay 14 pay 11, stay 10 pay 8, stay 7 pay 6. Not valid 27th Dec - 2nd Jan 2010

White Crystal Inn DELUXE

Located slope side in the heart of the village. The White Crystal Inn offers the ultimate in ski in/ski out accommodations. Large spacious rooms provide ideal views. The hotel offers a complete dining and après ski experience. Kitchenettes are also available.

ROOM TYPE	STD	SUP K/ETTE
No. Sharing	2	2
4th Dec - 17th Dec	153	180
18th Dec - 26th Dec	218	257
27th Dec - 2nd Jan	269	317
3rd Jan - 4th Feb	160	189
5th Feb - 27th Mar	196	233

Rates based on 5 nights or more. Child 18Yrs and Under FOC.




SPECIALS
• Special- Stay 14 pay 11, stay 10 pay 8, stay 7 pay 6. Not valid 27th Dec - 2nd Jan 2010

Chateau Big White DELUXE

Located in the heart of the village with a quad chairlift at your doorstep. Rooms feature gas fireplace, microwave, mini fridge and safe. Amenities include restaurant & bar, ski lockers, hot tub with spectacular views and parking.

ROOM TYPE	SUP K/ETTE	1BRM	2BRM PLUS
No. Sharing	2	4	4
4th Dec - 17th Dec	180	233	288
18th Dec - 26th Dec	257	332	412
27th Dec - 2nd Jan	317	410	507
3rd Jan - 4th Feb	189	245	303
5th Feb - 27th Mar	233	300	371

Rates based on 5 nights or more. Child 18Yrs and Under FOC.




SPECIALS
• Special- Stay 14 pay 11, stay 10 pay 8, stay 7 pay 6. Not valid 27th Dec - 2nd Jan 2010

The Inn at Big White MODERATE

Situated in the heart of the village centre, the Inn at Big White features excellent resort amenity access. This 100-unit property offers a relaxing atmosphere. After a hard day on the slopes, skiers and boarders love to relax and enjoy the breathtaking views in the outdoor pool and hot tub.






ROOM TYPE	SUP	1BRM	CNR UNIT
No. Sharing	2	4	4
4th Dec - 17th Dec	172	233	245
18th Dec - 26th Dec	199	269	283
27th Dec - 2nd Jan	289	391	412
3rd Jan - 4th Feb	172	233	245
5th Feb - 27th Mar	199	269	283

Rates based on 5 nights or more. Child 18Yrs and Under FOC.



SPECIALS
• Special- Stay 14 pay 11, stay 10 pay 8, stay 7 pay 6. Not valid 27th Dec - 2nd Jan 2010

Big White Condos

	Whitefoot Lodge Budget Kitchenette Studio 1 & 2brm Std 1 & 2brm reg		Black Bear 3 brm Prem with Hot Tub		Chateau on the Ridge 2, 3 & 4 brm Reg
	Grizzly Lodge Studio, 1 & 2 brm Premium 1 & 2 brm + Prem 2 brm Reg 1 & 2 brm Prem with Hot Tub		Towering Pines 2, 3 & 4 brm Prem with Hot Tub		Trappers Crossing 1, 2 & 3 brm Prem with Hot Tub 2 & 3 brm + Prem with Hot Tub
	Ptarmigan Inn 1Brm Std 1Brm Reg 2Brm Std		Bullet Creek Condos 2 & 3 brm Homes with Hot Tub 3 & 4 brm + Homes with Hot Tub	CALL YOUR CONSULTANT FOR MANY MORE CONDOMINIUMS IN BIG WHITE.	

SPECIALS
• Special- Stay 14 pay 11, stay 10 pay 8, stay 7 pay 6. Not valid 27th Dec - 2nd Jan 2010

ROOM TYPE	1BRM			2BRM			3BRM			4 BRM		
	STD	REG	PREM & HOT TUB	STD	REG	PREM & HOT TUB	REG	PREM & HOT TUB	REG	PREM & HOT TUB	REG	PREM & HOT TUB
No. Sharing	2			4			6			8		
26 Nov - 18 Dec	138	182	257	208	245	337	354	453	354	534	534	534
19 Dec - 26 Dec	228	301	425	344	405	556	585	747	585	883	883	883
27 Dec - 2 Jan	276	364	514	417	490	674	710	905	710	1070	1070	1070
3 Jan - 5 Feb	153	201	283	230	269	371	391	499	391	589	589	589
6 Feb - 28 Mar	199	262	369	300	352	485	509	650	509	768	768	768

Rates based on 5 nights or more. Child 18Yrs and Under FOC.

Silver Star

From the second you arrive, you'll notice the difference. Silver Star Mountain Resort is not your typical ski destination. The mid-mountain Victorian village is painted on a canvas of champagne powder that evokes memories of days gone by. Quaint retail shops and a mix of fine dining and affordable pub-style food offers visitors a variety of choices while exploring the village. With more than 700 cm of dry, light powder blanketing the 115 runs on the mountain, the skiing offers something for everyone. From long, groomed cruisers to double black diamonds and gladed tree runs, Silver Star will inspire your senses.

Throw in the benefit of ski-in/ski-out accessibility from most of our accommodations, and you'll understand why people love to call Silver Star "my mountain."

SPECIALS

SEASON PASSES

- EARLYBIRD book and pay by 14 Sept
- PRE- SEASON book and pay by 31 Oct
- REGULAR Book and pay 30 days prior to arrival of guest

LIFT PASSES

- Purchase 5 or 6 days and get 1 additional day **FREE**
- Purchase 7, 8 or 9 days and get 2 additional days **FREE**
- Purchase 10 or more days and get 3 additional days **FREE**
Valid Nov 28 to Dec 23 and Jan 3 to Apr 4. Conditions apply.

FAMILY SPECIAL

- Children 15yrs and under ski **FREE**
Valid Nov 28 – Dec 23 and Jan 3 to Apr 4. Conditions apply .
- Children 15yrs and under rent **FREE**
Valid Mar 28 to Apr 4. Conditions apply.

LESSONS

- Purchase 1 lesson and receive a 2nd Lesson **FREE**
Valid Mar 28 to Apr 4. Conditions apply.

LIFT PASSES & TRANSFERS	ADULT	YOUTH (13-18YRS)	CHILD (6-12YRS)
6 Day Liftpass from:	370	309	170
Transfers (one-way): Kelowna - Silver Star	71	71	47

CALL ALPINE WORLD ON 1300 138 311 FOR RATES ON MANY MORE PROPERTIES IN SILVER STAR

- | | |
|----------------------------------|--|
| 1. Bulldog Hotel | 6. Silver Creek Hotel |
| 2. Creekside Condos | 7. Silver Star Club Resort Chilcoot Centre |
| 3. Firelight Silver Star | 8. Snowbird Lodge |
| 4. Grandview | 9. Vance Creek Hotel |
| 5. Lord Aberdeen Apartment Hotel | 10. Victorian Vacation Homes |



Firelight Silver Star

Located on the shores of Brewer's Pond at Silver Star Mountain Resort, FireLight is aimed at those who love the beauty of a natural pond and multi-sport enthusiasts who seek new challenges and desire the perfect "base camp" for the full variety of mountain activities. The frozen pond is perfect for a game of three-on-three pickup hockey, or for a pleasant moonlight skate – you can even skate around an island! Like all of the mountain homes at Silver Star, FireLight will be truly 'ski-in/ski-out' – with access via the new Silver Queen chairlift.

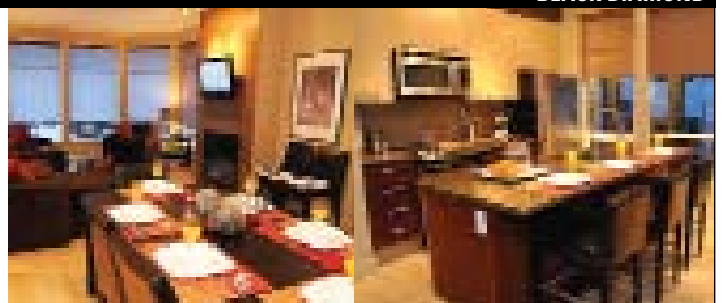
ROOM TYPE	STUDIO	1BRM	2BRM	3BRM
No. Sharing	2	4	6	8
18th Dec - 23rd Dec	218	289	451	611
24th Dec - 2nd Jan	301	403	625	941
3rd Jan - 4th Feb	203	271	420	570
5th Feb - 27th Mar	218	289	451	611
28th Mar - 4th Apr	203	271	420	570

Rates based on 5 nights or more. Child 18Yrs and Under FOC.

SPECIALS

- Special- Stay 7 pay 6, stay 10 pay 8, stay 14 pay 11. Not valid 24th Dec - 2nd Jan 2010

BLACK DIAMOND



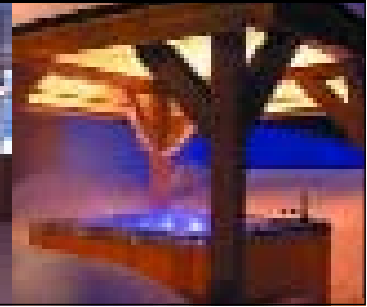
Snowbird Lodge

Uncompromising luxury, stunning views, direct access to the village and a true ski-in/ski-out experience. The Snowbird Lodge is located at the slopeside end of the Village and offers 54 suites with spectacular views of the Monashee Mountains and the front side of Silver Star ski area. There is no better ski-in/ski-out accommodation on the hill. Current amenities at Snowbird Lodge include swimming pool, hot tub, a 24-seat theater, fitness room, family lounge with billiards, heated underground parking, and equipment locker and wax room.

ROOM TYPE	STUDIO	1BRM	2BRM	3BRM
No. Sharing	2	4	6	8-10
18th Dec - 23rd Dec	242	422	539	681
24th Dec - 2nd Jan	337	584	747	943
3rd Jan - 4th Feb	226	393	504	636
5th Feb - 27th Mar	242	422	539	648
28th Mar - 4th Apr	226	393	504	636

Rates based on 5 nights or more. Child 18Yrs and Under FOC.

SPECIALS
 • Special- Stay 7 pay 6, stay 10 pay 8, stay 14 pay 11. Not valid 24th Dec - 2nd Jan 2010. Not valid on Penthouse



BLACK DIAMOND

Victorian Vacation Homes

In the heart of Silver Star, these Victorian-inspired vacation homes are individually and uniquely decorated. Units have easy access to lifts and village amenities. Units feature full size kitchen, gas fireplace, great views, most units also have private hot tub.

BEDROOMS/HOME	3BRM REG	3BRM PREM	4BRM PREM
No. Sharing	8-9	8-12	10-16
18th Dec - 23rd Dec	553	625	684
24th Dec - 2nd Jan	766	868	948
3rd Jan - 4th Feb	465	526	575
5th Feb - 27th Mar	553	625	684
28th Mar - 4th Apr	465	526	575

Rates based on 5 nights or more. Child 18Yrs and Under FOC.

SPECIALS
 • Special- Stay 7 pay 6, stay 10 pay 8, stay 14 pay 11. Not valid 24th Dec - 2nd Jan 2010



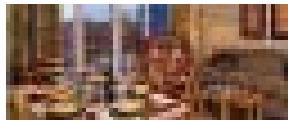
PREMIER

Silver Star Club Resort Chilcoat Centre

Decorated in a modern-Victorian theme, the Chilcoat offers a variety of accommodations, from contemporary deluxe guest rooms to spacious one and two bedroom luxury condo style suites with full kitchen facilities. The Chilcoat offers convenience to guests attending functions in the convention centre and adjoins the Vance Creek Building central check-in and reception facilities, all located in the heart of Silver Star Mountain Village.

ROOM TYPE	REG ROOM	1BRM W/ALCOVE	2BRM
No. Sharing	*2	4	8
18th Dec - 23rd Dec	88	284	402
24th Dec - 2nd Jan	101	380	543
3rd Jan - 4th Feb	77	230	334
5th Feb - 27th Mar	88	284	402
28th Mar - 4th Apr	77	230	334

*Rates are p.p. Rates based on 5 nights or more. Child 18Yrs and Under FOC.



SPECIALS
 • Special- Stay 7 pay 6, stay 10 pay 8, stay 14 pay 11. Not valid 24th Dec - 2nd Jan 2010

DELUXE



Silver Creek Hotel

The Silver Creek is best known for its spacious rooms, warm atmosphere and spectacular views of the Monashee Mountains. Enjoy open living rooms and kitchens and large bedrooms, and gas fireplace to keep you warm on a snowy winter evening.

ROOM TYPE	STUDIO	DLX 1BRM W/ALCOVE	SPR 1BRM W/ALCOVE
No. Sharing	4	4	4
18th Dec - 23rd Dec	216	230	250
24th Dec - 2nd Jan	311	380	442
3rd Jan - 4th Feb	203	216	237
5th Feb - 27th Mar	216	230	250
28th Mar - 4th Apr	203	216	237

Rates based on 5 nights or more. Child 18Yrs and Under FOC.



SPECIALS
 • Special- Stay 7 pay 6, stay 10 pay 8, stay 14 pay 11. Not valid 24th Dec - 2nd Jan 2010

DELUXE

Creekside Condos

Condominiums at the new Creekside development with fantastic ski access. Located close to Tube Town and the Skating Pond. Night skiing right outside the door at the Silver Queen Run is just an added bonus.

ROOM TYPE	STUDIO	2BRM 1 BATH	2BRM 2 BATH
No. Sharing	4	4-6	4-6
18th Dec - 23rd Dec	203	320	364
24th Dec - 2nd Jan	281	442	504
3rd Jan - 4th Feb	170	269	305
5th Feb - 27th Mar	203	320	364
28th Mar - 4th Apr	170	269	305

*Rates are p.p. Rates based on 5 nights or more. Child 18Yrs and Under FOC.



SPECIALS
 • Special- Stay 7 pay 6, stay 10 pay 8, stay 14 pay 11. Not valid 24th Dec - 2nd Jan 2010

DELUXE

Vance Creek Hotel

The Hotel offers a variety of guest rooms. Features: rooftop hot tubs, Clementine's Dining Room, Italian Garden restaurant, Vance Creek Saloon. Rooms come with a full kitchen, living area, and bathroom.

ROOM TYPE	STD ROOM	1BRM SUITE	2BRM SUITE
No. Sharing	*2	4	6
18th Dec - 23rd Dec	88	203	334
24th Dec - 2nd Jan	101	298	448
3rd Jan - 4th Feb	77	189	306
5th Feb - 27th Mar	88	203	334
28th Mar - 4th Apr	77	189	306

*Rates are p.p. Rates based on 5 nights or more. Child 18Yrs and Under FOC.



SPECIALS
 • Special- Stay 7 pay 6, stay 10 pay 8, stay 14 pay 11. Not valid 24th Dec - 2nd Jan 2010

MODERATE

Grandview

All Grandview Condos feature 2 bedrooms, 2 bathrooms and have excellent ski in/ski out access and fabulous views of the surrounding mountains. The condos feature, cable TV, elevator, ski lockers, underground parking and a common outdoor hot tub.

ROOM TYPE	2BRM/2 BATH
No. Sharing	8
18th Dec - 23rd Dec	364
24th Dec - 2nd Jan	504
3rd Jan - 4th Feb	305
5th Feb - 27th Mar	364
28th Mar - 4th Apr	305

*Rates based on 5 nights or more. Child 18Yrs and Under FOC



SPECIALS
 • Special- Stay 7 pay 6, stay 10 pay 8, stay 14 pay 11. Not valid 24th Dec - 2nd Jan 2010

MODERATE

Bulldog Hotel

Located in the heart of Silver Star Village close to lifts, restaurants and shopping. The building has drastically been updated to include the Grand Cafe with indoor patio and exterior sun deck, fireplaces and leather lounges.

ROOM TYPE	REG ROOM	STD K/ETTE
No. Sharing	*2	4-6
18th Dec - 23rd Dec	122	271
24th Dec - 2nd Jan	122	271
3rd Jan - 4th Feb	74	189
5th Feb - 27th Mar	95	216
28th Mar - 4th Apr	74	189

*Rates are p.p. Rates based on 5 nights or more. Child 18Yrs and Under FOC.



VALUE

Lord Aberdeen Apartment Hotel

In the heart of the resort village, each unit has its own private entrance. All apartments are complete with kitchen, living room, separate bedrooms, TV and telephone. Amenities include deli bar, liquor outlet, general store and laundry facilities.

ROOM TYPE	1BRM BASEMENT	1BRM	2BRM
No. Sharing	4	4	6
18th Dec - 23rd Dec	189	271	298
24th Dec - 2nd Jan	271	352	407
3rd Jan - 4th Feb	162	230	257
5th Feb - 27th Mar	189	271	298
28th Mar - 4th Apr	162	230	257

Rates based on 5 nights or more. Child 18Yrs and Under FOC.



SPECIALS
 • Special- Stay 7 pay 6, stay 10 pay 8, stay 14 pay 11. Not valid 24th Dec - 2nd Jan 2010

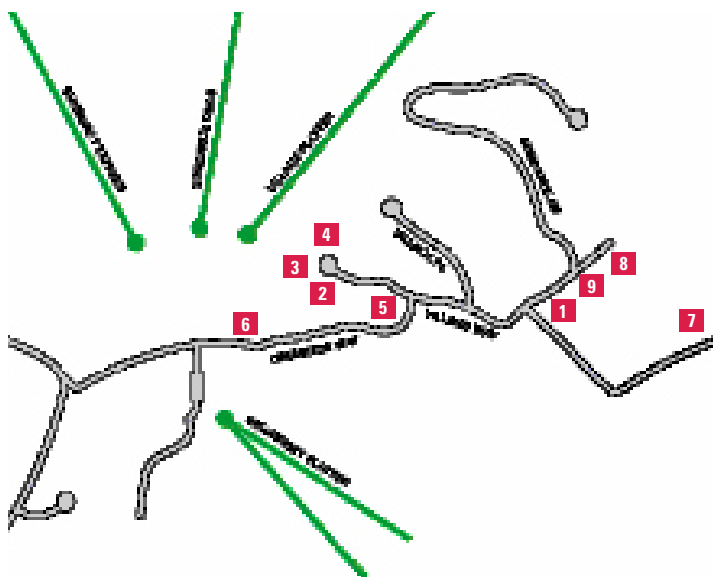
VALUE



SunPeaks

Three magnificent mountains with 122 runs and an award winning village makes Sun Peaks a favourite destination of Australian snow lovers. Sun Peaks is Canada's third largest ski area with modern facilities and easy-to-ski dry snow. Most trails lead right into the village which makes for a convenient meeting point with family and friends.

Terrain park enthusiasts will enjoy the challenge of the variety of boxes, rails and hits. Powder hunters will revel in the soft snow to be found in the 2 alpine bowls and any of the 12 gladed forest areas on the mountain. After a day on the mountain, ski back to the quaint and cosy village where there is a restaurant, café or bar to suit any occasion. Sun Peaks also offers a host of activities such as snowshoeing, snowmobiling, tubing park, dog sledding tours, ice skating and much more.



- | | |
|---------------------------------|-----------------------------|
| 1. Crystal Forest | 6. The Coast Sundance Lodge |
| 2. Delta Residences | 7. The Stones Throw Condos |
| 3. Delta Sun Peaks Resort | 8. Trails Edge |
| 4. Nancy Greene's Cahilty Lodge | 9. Trappers Landing |
| 5. Sun Peaks Lodge | |

SPECIALS

EARLYBIRD LIFT PASSES

- Buy a 3-4 Day Lift Pass and **SAVE 5%**
- Buy a 5-9 Day Lift Pass and **SAVE 15%**
- Buy a 10+ Day Lift Pass and **SAVE 20%**

Book by 15 Nov. Not valid Dec 21 – Jan 2 2010.

FAMILY SPECIAL

- Children 18yrs & under Ski **FREE**. One child per paying adult

Book by 15 Nov. Not valid Dec 21 – Jan 2 2010. Conditions apply.

SEASON PASSES

- **EARLYBIRD:** Book and pay by 26th Oct 2009
 – Adult \$1013 Young Adult (16-18yrs) \$804 Youth (13-15yrs) \$721
 Child (6-12yrs) \$513
- **REGULAR:** Adult \$1290 Young Adult (16-18yrs) \$943 Youth (13-15yrs) \$860 Child (6-12yrs) \$651

LIFT PASSES & TRANSFERS	ADULT	YOUTH (13-18YRS)	CHILD (6-12YRS)
6 Day Liftpass from:	417	338	213
Transfers (one-way): Kamloops – Sun Peaks	56	56	FOC (0-10yrs)

IceWineFestival January 11-17, 2010

Sun Peaks Resort and the Okanagan Wine Festivals are pleased to present this unique wine festival that is a wonderful marriage of wines, food and outdoor recreation. Spectacular wines and an award winning alpine resort create an unbelievable weekend of education and recreation. Sun Peaks Resort is renowned for its dedication to quality; when combined with the Late Harvest and Icewines of British Columbia this creates a truly memorable Canadian winter getaway.



**CALL ALPINE WORLD ON 1300 138 311 FOR RATES
ON MANY MORE PROPERTIES IN SUN PEAKS**

Delta Residences

BLACK DIAMOND

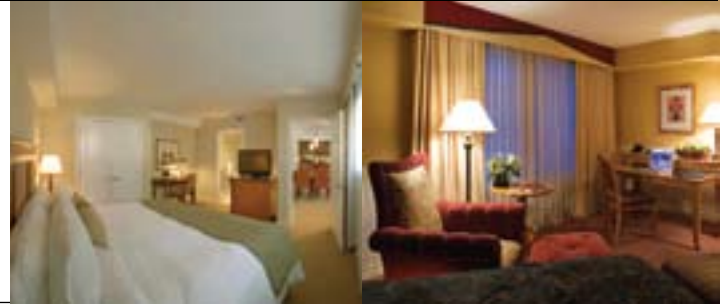
Live in the lap of luxury with this superbly decorated hotel and all the amenities it has to offer. Located in the heart of the village, it allows skiers the convenience of a slope side location as well as breathtaking views from every direction. The hotel amenities include the fabulous 'Mantles' Restaurant and Bar, ski rental, health club, heated outdoor pool, hot tubs, fitness centre and sauna. Rooms are ideal for families with the option of interconnecting rooms.

ROOM TYPE	1BRM	2BRM
No. Sharing	2	2
21st Nov - 25th Dec	336	423
26th Dec - 1st Jan	630	717
2nd Jan - 31st Jan	558	644
1st Feb - 28th Feb	630	717
1st Mar - 21st Mar	379	552

Child 18Yrs and Under FOC

SPECIALS

- Earlybird- Book by 22nd Jul and stay 7 pay 6. Friday check-in only
- Stay 10 pay 8, stay 14 pay 11, stay 21 pay 16. Not valid 26 Dec - 1 Jan 2010



Delta Sun Peaks Resort

DELUXE

Located slopeside in the heart of the village with breathtaking views from every direction. The hotel amenities include the fabulous 'Mantles' Restaurant and Bar, ski rental, health club, heated outdoor pool, hot tubs, fitness centre and sauna. Rooms are ideal for families with the option of interconnecting rooms.

ROOM TYPE	DELTA HOTEL RM		
No. Sharing	*2	*3	*4
21st Nov - 25th Dec	81	66	58
26th Dec - 1st Jan	164	121	99
2nd Jan - 31st Jan	127	96	81
1st Feb - 28th Feb	164	121	99
1st Mar - 21st Mar	103	80	69

*Rates are p.p. Child 18Yrs and Under FOC.

SPECIALS

- Earlybird- Book by 1st July and receive complimentary continental breakfast
- Earlybird- book by 15th Nov and receive every 3rd night FREE
- Special- Stay 7 pay 6, stay 10 pay 8, stay 14 pay 11. Not valid 26th Dec - 2nd Jan 2010
- Special- Book 2 inter-connecting Delta rooms and received \$20CAD a night off the 2nd room



Nancy Greene's Cahilly Lodge

DELUXE

A ski-in/ski-out property within walking distance to shops. Features hot tub, fitness room and restaurant. Rooms feature TV/VCR, bathroom & phone, while condos also include full or efficiency kitchens.

ROOM TYPE	LODGE	STUDIO K/ETTE	1BRM	2BRM
No. Sharing	*4	2	4	4
21st Nov - 23rd Dec	48	145	268	359
24th Dec - 31st Dec	84	320	457	532
1st Jan - 31st Jan	54	168	291	381
Feb - 12th Mar	65	213	336	426
13th Mar - 13th Apr	48	145	268	359

*Rates are p.p. Includes FREE 2hr Ski Familiarisation. Child 17Yrs and Under FOC.



SPECIALS

- Earlybird- Book by 1st Jul and pay by 30th Sept and receive a 15% discount.
- Earlybird- Book by 15th Nov and pay by 30th Nov and receive a 10% discount.
- Special- Stay 7 nights or more and receive a free transfer to Whistler for 2 people



The Coast Sundance Lodge

MODERATE

Located centrally at the base of the Sundance Chairlift with convenient ski in/out access. This full service resort hotel also offers an outdoor hot tub and "Bottom's Bar & Grill", in-house laundry, retail shops, ski storage, cafe and underground parking.

ROOM TYPE	COMFORT	SUPERIOR	1BRM
No. Sharing	*2	*2	4
15th Nov - 24th Dec	74	74	268
25th Dec - 2nd Jan	172	172	466
3rd Jan - 4th Feb	90	90	301
5th Feb - 27th Feb	104	104	329
28th Feb - 27th Mar	95	95	312

*Rates are p.p. Child 15Yrs and Under FOC.



SPECIALS

- Earlybird- Book by 15th Nov and receive a 15% discount.
- Special- Stay 7 pay 6, stay 14 pay 11. Not valid 25th Dec - 2nd Jan 2010

Crystal Forest

MODERATE

Just a short distance from the Village Core & Sports Centre, these one, two, three, and four bedroom townhouses and condominiums feature gas fireplaces, heated tiled floors, pine woodwork throughout, ski & equipment storage, and underground parking.

ROOM TYPE	1BRM	2BRM	3BRM
No. Sharing	4	6	8
20th Nov - 23rd Dec	225	303	346
24th Dec - 31st Dec	450	623	849
1st Jan - 12th Feb	312	381	520
13th Feb - 20th Mar	372	442	606
21st Mar - 12th Apr	225	303	346



SPECIALS

- Special- Stay 7 pay 6, stay 12 pay 10, stay 14 pay 11, stay 21 pay 16. Not valid 24th Dec - 31st Dec 2009

Trails Edge

MODERATE

These 58 luxurious townhomes are situated to maximize their southern exposure and views of Mt. Morrisey and Tod Mountain. Trails Edge is located at the base of Sundance Mountain and Mt. Morrisey. It is a six minute walk to the Village Centre and enjoy ski-in/ski-out location.

ROOM TYPE	2BRM	3BRM	4BRM
No. Sharing	6	8	10
20th Nov - 23rd Dec	329	424	502
24th Dec - 31st Dec	693	866	1039
1st Jan - 12th Feb	450	572	693
13th Feb - 20th Mar	494	693	866
21st Mar - 12th Apr	329	424	502



SPECIALS

- Special- Stay 7 pay 6, stay 12 pay 10, stay 14 pay 11, stay 21 pay 16. Not valid 24th Dec - 31st Dec 2009

Trappers Landing

MODERATE

These are high-end units with granite counter tops, full kitchens, washer/dryers, private hot tubs, and private garages. All units have easy ski access from the slopes and are professionally decorated. 2, 3, and 4 bedroom units available.

ROOM TYPE	2BRM	3BRM	4BRM
No. Sharing	6	8	10
20th Nov - 23rd Dec	329	424	502
24th Dec - 31st Dec	693	866	1039
1st Jan - 12th Feb	450	572	693
13th Feb - 20th Mar	494	693	866
21st Mar - 12th Apr	329	424	502



SPECIALS

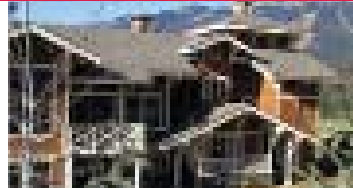
- Special- Stay 7 pay 6, stay 12 pay 10, stay 14 pay 11, stay 21 pay 16. Not valid 24th Dec - 31st Dec 2009

The Stones Throw Condos

MODERATE

Newest on the block, these condos are right where you want to be. Stone's Throw is located on the 16th fairway of the golf course near the base of the Mt. Morrisey chairlift. There are 2 and 3 bedroom units available with all the amenities you will need.

ROOM TYPE	2BRM	3BRM
No. Sharing	6	8
20th Nov - 23rd Dec	320	364
24th Dec - 31st Dec	658	849
1st Jan - 12th Feb	424	537
13th Feb - 20th Mar	468	623
21st Mar - 12th Apr	320	364



SPECIALS

- Special- Stay 7 pay 6, stay 12 pay 10, stay 14 pay 11, stay 21 pay 16. Not valid 24th Dec - 31st Dec 2009

Sun Peaks Lodge

VALUE

Located in the heart of Sun Peaks Village with ski-in/ski-out access minutes from village shops & restaurants. Rooms come with all modern amenities and the Hotel offers hot tub, sauna or steam room, ski storage and underground parking.

ROOM TYPE	STANDARD	
No. Sharing	*2	*3
4th Dec - 24th Dec	82	72
25th Dec - 2nd Jan	138	109
3rd Jan - 28th Jan	94	80
29th Jan - 11th Feb	103	86
12th Feb - 28th Feb	120	98



SPECIALS

- Special- Stay 7 pay 6, Stay 14 pay 12, Stay 21 Pay 16. Valid all season

*Rates are p.p. Child 15Yrs and Under FOC.



Alberta

The province of Alberta contains some of Canada's most spectacular scenery and driest snow conditions. The skiing and snowboarding in Marmot Basin, Banff and Lake Louise just get better and better, with new runs and faster lifts, cozy lodges, and increasingly innovative terrain parks. With hundreds of kilometres of marked trails – from beginner to expert – spread over four world-class ski resorts, the truly dedicated could take an entire winter to entirely explore the vast terrain.

The town of BANFF is the action hub of the ski areas of Lake Louise, Sunshine Village and Norquay. Banff has an array of accommodation of different standards and the town is full of restaurants, bars, spa centres and operators who will take you to some of the most memorable adventures and tours. Enjoy the convenience and flexibility of an interchangeable ski area lift pass. There is also a free shuttle bus between Banff and the ski areas included when you purchase a lift pass.

Spectacular scenery awaits at LAKE LOUISE with uniquely beautiful terrain that is both vast and varied. The wilderness is pristine and inspirational. Located in the heart of majestic, historic Banff National Park, Lake Louise is truly legendary and offers world class terrain.

With 4200 skiable acres, Lake Louise is one of the largest ski areas in North America. The unique layout allows families and groups of varying abilities to ski together as there are beginner, intermediate and expert runs down from every chair. Beginners and intermediate skiers have access to an abundance of gentle slopes and long cruising runs. Experts can explore endless chutes, glades, gullies and remote bowls in some of the Rockies' most challenging terrain.

For 80 years SUNSHINE VILLAGE Ski & Snowboard Resort has been serving up what is usually only found in skier's and snowboarder's dreams: endless mountain terrain in the heart of an unspoiled wilderness. Sunshine Village is renowned for its lengthy season from mid-November until late May. Just 15 minutes from the resort town of Banff. Sunshine Village offers over 3,300 acres of terrain on three mountains. With over 30 feet of Canada's best snow dumped annually at Sunshine Village, skiers and riders have an opportunity to regularly enjoy fresh powder.

Banff

SPECIALS

FAMILY SPECIAL

- Children 12yrs and under ski **FREE**
Conditions apply.

EARLYBIRD

- Buy a 6 or 7 day Lift Pass and get 2 extra days **FREE**
- Buy a 8 or 9 day Lift Pass and get 3 extra days **FREE**
- Buy a 10 or 11 day Lift Pass and get 4 extra days **FREE**
- Buy a 12 day Lift Pass and get 5 extra days **FREE**
Book by 30 November.

LIFT PASSES & TRANSFERS	ADULT	YOUTH (13-18YRS)	CHILD (6-12YRS)
6 Day Liftpass from:	596	531	197
Transfers (one-way): Calgary - Banff	66	66	44 (2-11yrs)
Transfers (one-way): Calgary - Lake Louise	86	86	49 (2-11yrs)

Banff Town Map



- | | |
|-------------------------------------|----------------------------|
| 1. Banff Caribou Lodge | 7. Mt Royal Hotel |
| 2. Banff International Hotel | 8. Rimmrock |
| 3. Delta Banff Royal Canadian Lodge | 9. Rundle Manor |
| 4. Douglas Fir Resort | 10. The Fox Hotel & Suites |
| 5. Fairmont Banff Springs Hotel | 11. The Ptarmigan Inn |
| 6. HI Hostel | |

CALL ALPINE WORLD ON 1300 138 311 FOR RATES ON MANY MORE PROPERTIES IN BANFF, LAKE LOUISE AND JASPER

Fairmont Banff Springs Hotel

BLACK DIAMOND

The Fairmont Banff Springs offers stunning vistas. Its unique blend of opulence and seclusion has been a symbol of Rocky Mountain magnificence for more than a century. Styled after a Scottish baronial castle, The Fairmont Banff Springs offers championship golf courses, unparalleled skiing, classic cuisine and Willow Stream, a world class European-style spa. Experience timeless beauty and luxurious comfort in a pristine wilderness.

ROOM TYPE	FAIR RM	JNR SUITE	1BRM SUITE
No. Sharing	*2	*4	*4
1st Nov - 22nd Dec	140	186	283
23rd Dec - 2nd Jan	267	250	346
3rd Jan - 31st Jan	153	193	289
1st Feb - 31st Mar	216	224	321
1st Apr - 30th Apr	147	190	286

*rates are p.p. Child 18Yrs and Under FOC.

SPECIALS

- Earlybird- Book by 15th Nov and stay 7 pay 6, stay 10 pay 7, stay 14 pay 11.
- Special- Stay 7 pay 6, stay 14 pay 12
- Special- When combining stays at Jasper, Banff & Lake Louise Fairmont properties receive the 4th night free at each property
- Special- When combining stays 2 of the Fairmont properties receive the 5th night free at each property



Rimrock

PREMIER

The Rimrock offers a perfect combination of style and comfort for all guests. Hotel has fitness centre, pools and spa and with its simply breathtaking mountain views and unparalleled service and hospitality, this hotel will make your getaway a truly remarkable experience.

ROOM TYPE	SUP	DLX	PREM
No. Sharing	*4	*4	*4
1st Nov - 22nd Dec	84	94	107
23rd Dec - 2nd Jan	105	117	132
3rd Jan - 31st Jan	84	95	111
1st Feb - 31st Mar	91	102	119
1st Apr - 30th Apr	84	95	111

*Rates are p.p. Service charge applies.



SPECIALS

- Earlybird- Book by 11th Nov and receive a 15% discount
- Special- Stay 7 Pay 6

Delta Banff Royal Canadian Lodge

DELUXE

The quintessential Canadian lodge, with a distinctive Rundle Rock fireplace and walls covered in Canadian artwork. After a long day of adventure seeking, indulge in the Essential Escape, and take a dip in the mineral pool at the on-site Grotto Spa. Enjoy the mountain air with a nightcap on your private outdoor terrace. High-speed Internet access available in all guest rooms.

ROOM TYPE	DELTA RM	DLX SUITE
No. Sharing	*3 *4	*3 *4
1st Nov - 23rd Dec	96 82	138 114
24th Dec - 1st Jan	135 112	177 143
2nd Jan - 31st Jan	96 82	138 114
1st Feb - 4th Apr	111 94	153 125

*rates are p.p. Child 16Yrs and Under FOC.



Mt Royal Hotel

MODERATE

Set amongst the majestic mountains in a protected landscape, this hotel is simply breathtaking in style and service – not to mention the views! Guest facilities include plenty of on-site dining opportunities, sauna and indoor whirlpool. Room amenities feature cable TV, telephone, coffee maker, iron/board, hairdryer, in room safe, and climate control.

ROOM TYPE	STANDARD ROOM		
No. Sharing	*2	*3	*4
1st Nov - 17th Dec	66	55	50
18th Dec - 2nd Jan	100	78	67
3rd Jan - 28th Feb	75	61	54
1st Mar - 31st Mar	83	66	58

*rates are p.p. Child 18Yrs and Under FOC.



SPECIALS

- Special- Stay 7 pay 6

Banff International Hotel

MODERATE

Located on Banff's main avenue within easy walking distance to shopping and dining. Rooms feature satellite TV, tea/coffee maker, hairdryer, radio/ alarm clock and marble bathrooms. Facilities include restaurant and bar, coin laundry and complimentary use of whirlpool, sauna, steam bath, exercise room and underground parking.

ROOM TYPE	SUPR	PREM	LOFT
No. Sharing	*4	*4	*4
1st Nov - 17th Dec	57	65	73
18th Dec - 2nd Jan	82	90	98
3rd Jan - 4th Feb	57	65	73
5th Feb - 1st Apr	62	71	79

*rates are p.p. Child 16Yrs and Under FOC.



SPECIALS

- Earlybird- Book by 30th Sept and stay 7 pay 6

Banff Caribou Lodge

MODERATE

Within walking distance to downtown shops and restaurants. Featuring 200 well appointed rooms, the lodge is furnished in country maple. Amenities include health club complete with three whirlpools, steam room, sauna, free weights and exercise equipment. The Keg Steakhouse & Bar is a popular restaurant and prides itself on superb service & sensational meals.

ROOM TYPE	STD	SUP	LOFT
No. Sharing	*2	*2	*2
23rd Dec - 2nd Jan	130	140	217
3rd Jan - 11th Feb	75	85	217
12th Feb - 10th Apr	86	96	217
11th Apr - 6th May	75	85	217

*rates are p.p. Child 16Yrs and Under FOC



SPECIALS

- Special- Stay 7 Nights or more & receive \$50CAD room service meal credit per stay. Not valid 22 Dec - 2 Jan 2010
- Special- Stay 8 Nights pay 7. Not valid 23 Dec - 2 Jan & 12 Feb - 10 Apr 2010

Douglas Fir Resort

MODERATE

Located in the tranquil forests of Banff National Park, units feature complete kitchen, TV, fireplace, patio or balcony and in-room safe. Facilities include: laundry, indoor pool, kiddie pool, whirlpool, sauna, fitness room, squash and racquetball courts and two indoor waterslides.

ROOM TYPE	STUDIO	1BRM	1BRM/LOFT
No. Sharing	2	2	4
1st Nov - 11th Dec	155	181	319
12th Dec - 22nd Dec	207	236	366
23rd Dec - 1st Jan	324	354	513
2nd Jan - 12th Feb	155	181	319
13th Feb - 5th Apr	207	236	366

*Per person. Child 18Yrs and Under FOC in existing bedding.



SPECIALS

- Special - Stay 7-13 nights get 1 free, stay 14 nights or more get 2 nights free. Not valid 23rd Dec - 2nd Jan & 13th Feb - 5th Apr 2010

The Fox Hotel & Suites

MODERATE

The brand new Fox Hotel and Suites offers a unique accommodation style to Banff. The Fox features rundle rock stonework and cavern style hot pool inspired by Banff's original Cave and Basin site. The creative layout of the Fox Suites will offer a quiet respite after an adventurous day, with Banff dining and nightlife only minutes away.

ROOM TYPE	HOTEL	1BRM	2BRM
No. Sharing	*2	2	4
23rd Dec - 2nd Jan	157	502	690
3rd Jan - 11th Feb	100	348	540
12th Feb - 10th Apr	109	376	565
11th Apr - 6th May	100	348	540

*rates are p.p. Rates include Continental Breakfast. Rates based on 4 nights or more. Child 16Yrs and Under FOC.



Rundle Manor

MODERATE

Banff's best kept secrets, is an apartment style hotel located in downtown Banff on a quiet side street just off Banff Avenue. Great shopping and the best Banff has to offer are literally steps away from the hotel. Guests of Rundle Manor have complimentary access to the health facilities and spa of the Banff Ptarmigan Inn, and room service provided by Caramba! Restaurant.

ROOM TYPE	STUDIO	1BRM	2BRM
No. Sharing	2	4	6
23rd Dec - 2nd Jan	204	291	384
3rd Jan - 11th Feb	160	251	358
12th Feb - 10th Apr	189	291	384

Child 16Yrs and Under FOC.



The Ptarmigan Inn

VALUE

The Banff Ptarmigan Inn is located just two minutes walk from downtown and boasts 134 hotel rooms. In-house facilities include Caramba restaurant, steam room, two hot tubs, sauna and exercise equipment.

ROOM TYPE	RUN OF HOUSE	SUP	PREM
No. Sharing	*2	*2	*2
23rd Dec - 2nd Jan	125	135	162
3rd Jan - 11th Feb	73	83	126
12th Feb - 10th Apr	83	93	132
11th Apr - 6th May	73	83	126

*rates are p.p. Child 16Yrs and Under FOC.



SPECIALS

- Special- Stay 7 Nights or more & receive \$50CAD room service meal credit per stay. Not valid 22 Dec - 2 Jan 2010
- Special- Stay 8 Nights pay 7. Not valid 23 Dec - 2 Jan & 12 Feb - 10 Apr 2010

HI Hostel

VALUE

Surrounded by stunning Rocky Mountain scenery, yet just a quick walk or bus ride to Downtown Banff, our hostel has everything for a backpacker who wants a great place to stay. Guest rooms are comfortable four to six-bed dorms for the budget-conscious traveller; however, it also offers a variety of private rooms from standard private with double bed to our more luxurious superior rooms with queen bed, ensuite washroom and TV/telephone. Log cabins also available.

ROOM TYPE	SHARED RM	PRIVATE RM
No. Sharing	*1	*1
1st Nov - 22nd Dec	45	128
23 Dec - 2nd Jan	N/A	N/A
3rd Jan - 31st Mar	45	128

*rates are p.p.



Lake Louise & Sunshine



Welcome to the hamlet of Lake Louise in the heart of Banff National Park. At Lake Louise you will enjoy the breathtaking scenery, the light dry powder and one of the longest ski seasons in Canada.

Fairmont Chateau Lake Louise

BLACK DIAMOND

Located on the shores of Lake Louise and just 3km from the Lake Louise Ski Area. Guests will be mesmerised by dramatic views of the Canadian Rockies and Victoria Glacier, while taking advantage of modern facilities. Features health club with heated pool, whirlpool, sauna, shops and boutiques.

ROOM TYPE	F/MONT	DLX	1BRM
No. Sharing	*2	*4	*4
1st Nov - 22nd Dec	136	113	411
23rd Dec - 2nd Jan	260	175	472
3rd Jan - 31st Jan	149	120	312
1st Feb - 31st Mar	206	148	445
1st Apr - 30th Apr	143	117	414

*rates are p.p. Child 18Yrs and Under FOC (Deluxe Rooms and Suites only)

SPECIALS

- Earlybird- Book by 13th Nov and stay 7 pay 6, stay 10 pay 7, stay 14 pay 11
- Special- Stay 7 Pay 6, Stay 14 pay 12. Valid all season
- Special- When combining stays at Jasper, Banff & Lake Louise Fairmont properties receive the 4th night free at each property
- Special- When combining stays 2 of the Fairmont properties receive the 5th night free at each property



Deer Lodge

DELUXE

Ideal for guests wishing to experience a unique historical Lodge with first class cuisine and amazing scenery. Deer Lodge offers a complimentary ski shuttle to Lake Louise ski hill, outdoor roof top hot tub with views of Victoria Glacier, Restaurant & Lounge.



ROOM TYPE	LDGGE	SUP	H/TAGE	KING
No. Sharing	*2	*4		*2
4th Dec - 17th Dec	65	59		112
18th Dec - 31st Dec	84	71		155
1st Jan - 11th Feb	65	59		112
12th Feb - 27th Mar	84	71		155
28th Mar - 31st May	65	59		112

*rates are p.p.

SPECIALS

- Special- Stay 10 pay 9. Not valid 18th Dec - 31st Dec

Lake Louise Inn

MODERATE

The closest hotel to Canada's single largest ski area. The Lake Louise Inn boasts a variety of room types, some with kitchen and fireplace. Facilities include indoor pool, steam room, two whirlpools, restaurant, cocktail lounge, pizzeria and laundry.



ROOM TYPE	ECON DBL	EXEC KING	BIGHORN LOFT
No. Sharing	*2	*2	*6
21st Dec - 2nd Jan	135	202	134
3rd Jan - 31st Jan	82	135	107
1st Feb - 18th Apr	120	172	124

*Per Person. Child 17Yrs and Under FOC.

HI Hostel

BUDGET

This unique mountain destination is full of character and charm with vaulted ceilings, sunny outdoor patios, cozy fireplaces, and a dry sauna. Bill Peyto's, our on site licensed café, is a local favourite and has become famous around the world for its diverse menu, fair pricing and friendly service.



ROOM TYPE	SHARED DORM	PRIVATE ROOM
No. Sharing	*1	*1
1st Nov - 22nd Dec	42	133
23rd Dec - 2nd Jan	n/a	n/a
3rd Jan - 31st Mar	42	133

*rates are p.p.

Sunshine Mountain Lodge

MODERATE

Banff's only ski-in/ski-out hotel and recently renovated this lodge is located at 2194m in the middle of the ski area. Amenities include outdoor hot-tub, restaurant, sauna, massage service and ski and board rentals.



ROOM TYPE	SPR	DLX	LOFT
No. Sharing	*3	*3	*6
10th Dec - 25th Dec	157	172	166
26th Dec - 2nd Jan	280	299	235
3rd Jan - 11th Feb	157	172	166
12th Feb - 10th Apr	205	222	192

*rates are p.p. Includes FREE skiing, FREE daily shuttle into Banff, FREE shuttle to Lake Louise (twice weekly), FREE evening shuttle into Banff every Friday and selected evening apres activities. Child 5Yrs and Under FOC.

SPECIALS

- Special- Stay 7 pay 6, stay 10 pay 8, stay 14 pay 11
- Special- Stay 8 nights or more and receive a complimentary welcome gift.

Jasper Marmot Basin



The ski resort of Marmot Basin provides first rate skiing encompassing 850 acres of exciting and varied terrain in generally uncrowded conditions. Jasper is a quaint town renown for its natural scenic beauty. **NEW for 2009/10 season – The longest high speed detachable chairlift in the Alberta Rockies.**

SPECIALS

- Children 12yrs and Under Ski **FREE** and rent **FREE**. One child per paying adult.
- Lift Pass includes **FREE** transfers from accommodation to the resort.

LIFT PASSES & TRANSFERS	ADULT	YOUTH (13-18YRS)	CHILD (7-12YRS)
6 Day Liftpass from:	283	283	135
Transfers (one-way): Calgary - Jasper	139	139	87 (2-11yrs)

Fairmont Jasper Park Lodge

BLACK DIAMOND

Situated in the heart of the Canadian Rockies, a short free shuttle trip to Marmot Basin Ski Area. Rooms feature colour TV, mini bar, and hair dryer. Facilities include restaurants, health spa, heated outdoor pool, exercise room, sauna, games room, boutique shops and massage therapy.

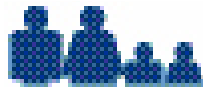
ROOM TYPE	F/MONT	DLX	LAKEFRONT SUITE
No. Sharing	*2	*4	*4
1st Nov - 22nd Dec	130	110	173
23rd Dec - 2nd Jan	216	157	220
3rd Jan - 31st Jan	140	115	174
1st Feb - 31st Mar	155	123	181
1st Apr - 30th Apr	140	115	174

*rates are p.p. Child 18Yrs and Under FOC.

SPECIALS

- Special- Stay 4 pay 3, stay 8 pay 6, stay 12 pay 9
- Special- One time FREE skate hire p.p. for the weekly skate party
- Special- FREE shuttle transfer p.p. to Marmot Basin
- Special- When combining stays at Jasper, Banff & Lake Louise Fairmont properties receive the 4th night free at each property
- Special- When combining stays 2 of the Fairmont properties receive the 5th night free at each property





SPECIALS

EARLYBIRD, LONG STAY FAMILY SPECIAL

- Kids 6 & under SKI **FREE** all season. Kids 15 & under SKI **FREE** for the months of JAN & APR only. *Conditions apply.*
 - Purchase 8 or 9 day lift pass and get 2 extra days **FREE**
 - Purchase 10 day lift pass or longer and get 3 extra days **FREE**
- Book by 30 Nov. Excludes Dec 20 to Dec 31.*

LIFT PASSES & TRANSFERS	ADULT	YOUTH (13-18YRS)	CHILD (7-12YRS)
6 Day Liftpass from:	428	294	162
Transfers (one-way): Calgary - Fernie	141	141	109 (5yrs & under)

Lizard Creek Lodge & Condos

PREMIER

Located in a prime position, ski down to the quad chair. All units are condo style, and have full kitchens, living room area with gas fireplace, balcony, TV and VCR and one or two complete bathrooms. Facilities include spa, heated outdoor pool, hot tub, gymnasium, wellness rooms, gift shop, ski/board rental.

ROOM TYPE	LODGE STUDIO	LODGE 1BRM LOFT	2BRM MOUNTAIN VIEW	3BRM LOFT
No. Sharing	2	4	4	6
25th Dec - 3rd Jan	540	783	914	1212
4th Jan - 29th Jan	346	520	603	894
30th Jan - 12th Feb	520	748	873	1164
13th Feb - 20th Feb	540	783	914	1212
21st Feb - 10th Apr	520	748	873	1164

Child 16Yrs and Under FOC.

SPECIALS

- Special - Stay 7 pay 6, stay 14 pay 12. Not valid 25th Dec - 3rd Jan & 13th - 20th Feb 2010



Revelstoke

Situated in the heart of the Selkirk and Monashee Mountains in British Columbia, the new Revelstoke Mountain Resort is an adventure skiers dream - epic Selkirk powder, miles of largely untouched terrain, killer runs and awesome vistas of the Columbia River Valley.

SPECIALS

- Purchase a multi day pass of 2 days or more and **SAVE UP TO 10%**
- Children 5yrs & under Ski **FREE**

FAMILY SPECIAL

LIFT PASSES & TRANSFERS	ADULT	YOUTH (13-18YRS)	CHILD (7-12YRS)
6 Day Liftpass from:	500	370	139
Transfers (one-way): Calgary - Revelstoke	TBA	TBA	TBA



Nelsen Lodge

DELUXE

The Nelsen Lodge is located at the base of the lower Gondola at Revelstoke Mountain. Crafted with natural materials that meld into the landscape.

ROOM TYPE	STUDIO	1BRM	2BRM
No. Sharing	*4	4	6
1st Dec - 18th Dec	129	518	778
19th Dec - 4th Jan	n/a	n/a	n/a
5th Jan - 23rd Jan	129	518	778
24th Jan - 28th Mar	154	622	934
29th Mar - 30th Apr	108	414	622

*rates are p.p. Child 14Yrs and Under FOC.



Hillcrest Hotel – A Coast Resort

MODERATE

The Hillcrest Hotel, a Coast Resort, is located is just 3 km from Revelstokes city centre and in between selkirk and monashee mountains. While enjoying your stay at this superb hotel with comfortable rooms and hotel facilities that include a exercise room, steam room, sauna, two hot tubs and a dining room with international and continental cuisine.

ROOM TYPE	COMFORT	SUPERIOR
No. Sharing	*4	*4
1st Nov - 30th Nov	60	69
1st Dec - 30th Apr	65	73

*rates are p.p. Child 18Yrs and Under FOC.



RedResort

Red is one of British Columbia's best kept secrets. An abundance of quality snow together with awesome uncrowded terrain makes Red a true hidden gem. Experienced skiers and riders will love the vertical and venturing off the groomers.

SPECIALS

FAMILY SPECIAL

- Children 6yrs & Under Ski **FREE** all season long.
- Children 12yrs & Under Ski **FREE** all season long. One to one with paying adult.

LIFT PASSES & TRANSFERS	ADULT	YOUTH (13-18YRS)	CHILD (7-12YRS)
6 Day Liftpass from:	474	378	237
Transfers (one-way): Kelowna - Red Mountain	148	148	148



88 Creekside

DELUXE

Elegant and spacious three and four bedroom units, with private hot tubs, gas fireplaces, fully equipped deluxe kitchens, heated floors. Just a short drive to the ski hill base area.

ROOM TYPE	3BRM DLXE	4BRM DLXE
No. Sharing	8	12
1st Dec - 17th Dec	245	293
18th Dec - 3rd Jan	643	786
4th Jan - 31st Mar	554	674
1st Apr - 30th Apr	245	293



SPECIALS

- Earlybird 1- Book by 1st Jul and receive a 20% discount
- Earlybird 2- Book by 30th Sept and receive a 15% discount
- Special- Stay 7 pay 6, stay 14 pay 12

Red Mountain Village

MODERATE

Luxury condo units with all the comforts of home nestled in beside Red Mountain Resort. Enjoy fully-equipped kitchens, gas fireplaces, private or common use hot tubs, parking, washer/dryer, within a few minutes of the ski lifts.

ROOM TYPE	SML CABIN	LGE CABIN	3BRM H/TUB
No. Sharing	3	6	8
24th Dec - 2nd Jan	220	247	480
3rd Jan - 12th Feb	177	200	388
13th Feb - 23rd Feb	220	247	480
24th Feb - 1st Mar	177	200	388
2nd Mar - 30th Apr	142	160	310

Rates based on 6 nights or more.



SPECIALS

- Special- Stay 7 pay 6. Not valid 2nd Mar - 30th Apr